

NEW!

52-520-110-2
pg. 26



Hi-Cal 150



NEW!

54-422-500-0
pg. 40



Over 30 NEW items!



NEW!

54-112-012-0
pg. 11

Valid Sept 1st - Dec. 31st

Visit us at www.fowlerprecision.com

Fowler

HIGH PRECISION

TOOL-A-THON

Vol. 16.3

Fowler-Trimos V3, V4 & V5 Electronic Height Gages

The Fowler-Trimos V3, V4 and V5 vertical measuring instruments have been developed for the most difficult workshop environments. Manufactured in their entirety in Switzerland, they guarantee a robust, precise and reliable product in the long run.

- Measuring ranges 400mm, 700mm and 1100mm
- Extremely easy to use
- "Black mask" display with user friendly functions
- Electronically adjustable measuring force 0.75/1.5 (N)
- Lithium-ion rechargeable batteries
- Vast range of accessories
- All adjustments possible without tools
- Cast iron base for optimal stability
- RS232 and USB interfaces requires 54-192-112-0 cable
- Air cushion (V4 and V5 Only)
- Dual probe holders (V4 and V5 Only)
- Carriage displacement: Manual
(V5 includes selectable manual or motorized carriage displacement)
- Measures heights, diameters, perpendicularity, centerlines, Min/Max/Delta
- Accessory measuring probes up to 340mm in length available and provide excellent repeatability
- Resolution: 0.00005"/0.001mm
- Repeatability (2s): 0.00008"/0.002mm (Ø 0.00016"/0.004mm)

All V Models Include:

- Charging unit
- Measuring insert with ruby ball Ø4mm
- Probe holder elbow Ø 8mm
- Setting gage
- User's manual
- Test certificate

Free Swiss Knife & Fowler Hat with Any V3, V4 & V5 purchase!



V3	54-192-340-0	54-192-370-0
Measuring Range	16"/407mm	28"/711mm
Range with Probe inverted	20"/508mm	31.9"/812mm
Max. Permissible Errors	0.00028"/0.007mm	0.00032"/0.008mm
Frontal Squareness Deviation	0.0004"/0.010mm	0.0006"/0.015mm
Air Cushion		NO



V4	54-191-440-0	54-191-470-0
Measuring Range	16"/407mm	28"/711mm
Range with Probe inverted	28.3"/719mm	40.2"/1023mm
Max. Permissible Errors	0.0002"/0.005mm	0.00028"/0.007mm
Frontal Squareness Deviation	0.0004"/0.010mm	0.0006"/0.015mm
Air Cushion		YES



V5	54-199-540-0	54-199-570-0	54-199-590-0
Measuring Range	16"/407mm	28"/711mm	43.7"/1110mm
Range with Probe inverted	28.3"/719mm	40.2"/1023mm	56"/1422mm
Max. Permissible Errors (µm)		2.5 + L(mm)/300	
Frontal Squareness Deviation	0.0002"/0.005mm	0.00032"/0.008mm	0.00043"/0.011mm
Air Cushion		YES	

Order No.	Description	Range	List Price	Sale Price
54-192-340-0	V3 Height Gage	16"/407mm	\$4366.62	\$4015.00
54-192-370-0	V3 Height Gage	28"/711mm	4814.40	4428.00
54-191-440-0	V4 Height Gage	16"/407mm	5751.78	5290.00
54-191-470-0	V4 Height Gage	28"/711mm	6691.20	6155.00
54-199-540-0	V5 Height Gage	16"/407mm	6339.30	5673.00
54-199-570-0	V5 Height Gage	28"/711mm	7512.30	6723.00
54-199-590-0	V5 Height Gage	43"/1100mm	11620.86	10400.00
Probe Sets				
54-199-105-0	4mm Probe Set, 21 piece		\$1679.94	\$1595.00
54-199-106-0	8mm Probe Set, 16 piece		1253.58	1190.00
54-199-107-0	Economy Probe Set, 7 piece		445.00	420.00

Fowler-Trimos Height Gage Probe Kits

4mm Probe Set

- Case
54-199-502-0 Disc-shaped insert Ø 7.7mm
Disc-shaped insert Ø 11.5mm
Corner insert 1mm
54-199-503-0 Measuring insert holder for: M2.5, M1.6, M1.4
54-194-948-0 Insert holder L=80mm M2.5
54-199-507-0 Insert holder 90° L=80mm Ø 4mm
54-199-508-0 Measuring insert holder Ø 1mm
54-199-512-0 Ruby Ball Probe Ø 2mm
54-199-509-0 Ball Probe Ø 1mm
54-199-510-0 Knife-edged measuring probe L=88mm
54-199-019-0 Holder with reduction 8mm/4mm
54-194-935-0 Swivel holder Ø4/Ø8mm
- Hemispheric probe
Probe with pin (plus 4 additional pins)
Test indicator tip Ø 1mm
Test indicator tip Ø 2mm
Test indicator tip Ø 3mm
Key for ball insert
Hex wrench 1.5mm
Hex wrench 2.5mm



54-199-105-0

8mm Probe Set

- Case
54-194-910-0 Carbide Ball Probe Ø 4mm L 140mm
54-194-906-0 Carbide Ball Probe Ø 2mm
54-194-912-0 Carbide Probe with pin Ø 1.5mm
54-194-938-0 Swivel holder 90° Ø 4mm
54-194-942-0 Measuring insert holder Ø 2mm
54-194-930-0,931-0 Insert holder (metric) M2.5
54-199-505-0 Insert holder L=124mm M2.5
Insert holder L=200mm M2.5
- Hemispheric probe tip
Disc-shaped insert Ø 18mm
Test indicator tip Ø 1mm
Test indicator tip Ø 2mm
Test indicator tip Ø 3mm
Key for ball tip
Hex wrench 2.5mm



54-199-106-0

Economy Probe Set

- Case
54-199-523-0 Disc-shaped insert Ø 18mm
54-199-504-0 Measuring insert M2.5 with ball contact
54-199-515-0 Hex wrench 2.5mm
54-194-906-0 Carbide ball probe Ø 2mm
54-194-942-0 Measuring insert holder Ø 2mm
54-194-938-0 Measuring insert holder 90°, Ø 4mm, L= 65mm



54-199-107-0

12"/300mm Probe Holder



54-199-400-0

Order No.	Description	List Price	Sale Price
54-199-105-0	4mm Probe Set, 21 piece	\$1679.94	\$1595.00
54-199-106-0	8mm Probe Set, 16 piece	1253.58	1190.00
54-199-107-0	Economy Probe Set, 7 piece	445.00	420.00
54-199-400-0	12"/300mm Holder — for 8mm probes	940.34	890.00

Inch - Metric - Fraction Gages

XTRA-VALUE^{Plus} Electronic Caliper

INCH • METRIC • FRACTION™



Order No. 54-103-006-0

Sale \$60.00

List \$71.07

- Measuring Range 6"/150mm
- Inch/Metric/Fraction reading: 0.0005"/.01mm/ 1/128"
- Dust, water and oil resistant to IP54 standards making it *great for shop environments*
- Heavy Duty frame for extra rigidity and wear
- Floating zero
- Super large, easy to read 14 x 52mm display
- 4-way measuring
- Combined thumbrest and thumbroll for fine adjustment
- Includes spare battery and fitted case

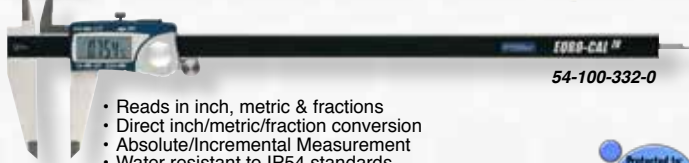


EURO-CAL^{IV}® Electronic Calipers



54-100-330-1

INCH • METRIC • FRACTION™



54-100-332-0

- Reads in inch, metric & fractions
- Direct inch/metric/fraction conversion
- Absolute/Incremental Measurement
- Water resistant to IP54 standards
- Resolution: 0.0005"/.01mm (*Fractions in 1/64" increments*)
- Stainless steel frame
- 4-way measuring
- Includes molded plastic case



Order No.	Description	Accuracy	List Price	Sale Price
54-100-330-1	6"/150mm Euro-Cal IV Electronic Caliper	± 0.001"/0.02mm	\$118.76	\$89.00
54-100-331-0	8"/200mm Euro-Cal IV Electronic Caliper	± 0.001"/0.02mm	140.60	105.00
54-100-332-0	12"/300mm Euro-Cal IV Electronic Caliper	± 0.0015"/0.03mm	180.35	135.00

Poly-Cal[®] Electronic Caliper

Absolute Reading!

INCH • METRIC • FRACTION™



- Polycarbonate Caliper Includes**
- Fractional Measurement
 - Easy-To-Read Display
 - Lightweight frame

- Range 6"/150mm
- Polycarbonate frame
- Large easy-to-read display
- Resolution 0.0005"/.01mm (*Fractions by 1/64" increments*)
- Absolute/Incremental Measurement
- Direct inch/metric/fraction conversion
- 4-way measuring
- Accuracy ± 0.008"
- Supplied with clip-on vinyl pouch

Order No. 54-101-175-0

Sale \$17.50

List \$26.06

Inch - Metric - Fraction Gages



X-Tread and Poly-Cal® Kit

Poly-Cal® Electronic Caliper (54-101-175-0):

- Range: 6"/150mm
- Polycarbonate Frame
- Resolution 0.0005"/.01mm
(Fractions by 1/64" increments).
- Absolute/Incremental Measurement
- 4-way measuring
- Accuracy: ±.008"



INCH • METRIC • FRACTION™



Tire Tread Gage (54-225-500-0):

For tire tread thickness measurement!

- Spring-loaded and hold measurement button for ease-of-use.
- Range: 1"/25mm
- Resolution: 0.0005"/.01mm.
(Fractions in 1/64" increments).
- 2.1" base
- .95" diameter rod

Order No. 54-004-500-0

Sale \$61.00

List \$83.22



Depth Gage and Poly-Cal® Kit

Poly-Cal® Electronic Caliper (54-101-175-0):

- Range: 6"/150mm
- Polycarbonate Frame
- Resolution 0.0005"/.01mm
(Fractions by 1/64" increments).
- Absolute/Incremental Measurement
- 4-way measuring
- Accuracy: ± 0.008"



INCH • METRIC • FRACTION™



Xtra-Value Depth Gage (54-225-555-0):

- Spring-loaded with a hold measurement button for ease-of-use.
- Super-large display
- Travel: 0-1"/25mm
- Application range: 0-16"/400mm
- Resolution: 0.0005"/.01mm
(Fractions in 1/64" increments)
- Supplied in shop-hardened case

Order No. 54-004-255-0

Sale \$70.00

List \$95.69



Depth Gage and Euro-Cal IV® Set

Euro-Cal IV (54-100-330-1):

- Range: 6"/150mm
- Water resistant to IP54 standards.
- Resolution 0.0005"/.01mm, fractions by 1/64 increments

INCH • METRIC • FRACTION™



Xtra-Value Depth Gage (54-225-555-0):

- Spring-loaded with a hold measurement button for ease-of-use
- Super-large display
- Travel: 0-1"/25mm
- Application range: 0-16"/400mm
- Resolution: 0.0005"/.01mm
(Fractions in 1/64" increments).
- Supplied in shop-hardened case.

Order No. 54-004-330-0

Sale \$135.00

List \$181.28



Inch - Metric - Fraction Gages

Snap-Cal

Fowler's Inch, Metric & Fraction reading Snap Caliper is ideal for measuring a wide range of materials from metal, plastics and glass to small wires, fibers and paper.



INCH • METRIC • FRACTION

- Range: 0-1.25"/31.5mm
- Resolution: 0.0005"/0.01mm (fractions in 1/64 increments)
- Spring-loaded travel
- Wide faced flat jaw for easy positioning
- Dimensions of fixed jaw: 0.470" x 0.900"
- Accuracy: ± 0.001"/.02mm
- Hardened stainless steel construction
- Direct inch/metric/fraction conversion
- Measuring speed of 60"/second
- Large, high contrast LCD display
- Hanging loop included for attachment to belt or chain

Order No. 54-550-300-0

Save
30%

Sale \$74.50

List \$101.04

XTRA-VALUE Depth Gage

INCH • METRIC • FRACTION™



- Spring-loaded and hold measurement button for ease-of-use
- Super-large display
- Travel: 0-1"/25mm
- Range: 0-22"/550mm
- Resolution: 0.0005"/.01mm (Fractions in 1/64" increments)
- Supplied in shop-hardened case



Order No. 54-225-555-0

Sale \$39.00

List \$59.33

X-TREAD® Tire Tread Thickness Gage

- Spring-loaded with a hold measurement button for ease-of-use
- Super-large display
- Range: 1"/25mm
- Resolution: 0.0005"/.01mm (Fractions in 1/64" increments)
- Supplied in vinyl holster



INCH • METRIC • FRACTION™

Order No. 54-225-500-0

Sale \$14.95

List \$23.69



TRA-VALUE CAL Electronic Calipers

TOOL-A-THON
BEST SELLER!
FOWLER HIGH PRECISION



54-101-150-2

Now available with optional N.I.S.T. Certification!



- Accuracy: 0.001"/.02mm (6" models)
- Stainless steel frame
- Large easy-to-read display
- Resolution: 0.0005"/0.01mm
- Direct inch/metric conversion
- Absolute/Incremental Measurement
- 4-way measuring
- Also available with super large display
- Includes molded case

Order No.	Range	Display Type	List Price	Sale Price
54-101-150-2	6"/150mm	Regular Display	\$47.79	\$35.00
54-101-150-C	6"/150mm	Regular Display with N.I.S.T Certificate	\$67.00	62.00
54-101-600-1	6"/150mm	Super Large Display with hold feature	59.43	39.60
54-101-200-1	8"/200mm	Regular Display	71.28	59.20
54-101-800-1	8"/200mm	Super Large Display with hold feature	89.10	67.00
54-101-300-1	12"/300mm	Regular Display	95.48	81.00
54-101-900-1	12"/300mm	Super Large Display with hold feature	118.97	89.00

TRA-VALUE II Electronic Micrometers



54-870-001-0

- Jet black, grey enamel finish
- Large LCD display, 8.5mm
- Resolution: 0.00005"/0.001mm
- Accuracy: $\pm 0.00016"/0.004mm$ (up to 2")
- Carbide measuring faces.
- Absolute and incremental modes
- Ratchet thimble
- Includes shop hardened case



Order No.	Range	List Price	Sale Price
54-870-001-0	0 - 1"/0 - 25mm	\$89.10	\$65.50
54-870-002-0	1 - 2"/25 - 50mm	90.23	67.50
54-870-003-0	2 - 3"/50 - 75mm	105.99	79.30
54-870-004-0	3 - 4"/75 - 100mm	112.48	84.00
Set			
54-870-103-0	0 - 3"/0 - 75mm Set	318.27	235.50

Prices & Specifications are subject to change without notice.

Fowler

TOOL-A-THON

Volume 16.3

Fowler-Sylvac Calipers considered by many as the **WORLD'S FINEST CALIPERS**

Fowler-Sylvac Ultra-Cal IV Electronic Caliper with round depth rod



Special SALE



- Range: 0-6"/150mm
- 1.5mm round depth rod
- Water resistant
- 4-way measuring
- Resolution: 0.0005"/0.01mm
- Repeatability: 0.0005"/0.01mm
- Direct Inch/Metric conversion
- Large easy-to-read LCD display
- Direct RS232C output
- Features Absolute/Relative Measuring Modes
- Hold function
- Thumbroll
- Includes case

Order No. 54-100-440-0

Sale \$91.00

Fowler-Sylvac Ultralight IV Electronic Calipers

The Fowler-Sylvac Ultralight IV, new design, new features, built-in Bluetooth transmitter. Discover our amazing Ultralight long range calipers.



Features

- Built-in Bluetooth
- New reinforced frame
- XXL display with .79"/20mm high digits
- Increased accuracy
- Lengthened jaws 7.9"/200mm
- New system for internal measurement
- Protected to IP67
- Moveable left jaw
- Stainless steel titanium coated jaws
- Hold feature
- Preset function
- Min/Max functions
- Tolerance mode
- Internal and external measurement indicator
- New twin guided main beam

Alternative Jaws Available, contact the

Fowler Technical Department for more information 1-800-788-2353

* 54-110-600-0 available as a special order

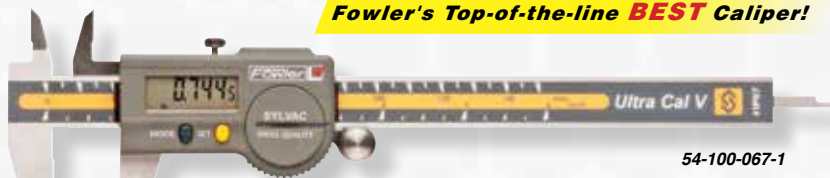
Order No.	Description	Accuracy	List Price	Sale Price
54-110-512-0	0-15"/0-400mm Ultralight IV	30µm/0.0012"	\$2128.23	\$1810.00
54-110-524-0	0-24"/0-600mm Ultralight IV	40µm/0.0016"	2482.99	2060.00
54-110-540-0	0-40"/0-1000mm Ultralight IV	50µm/0.002"	2857.63	2325.00
54-110-560-0	0-60"/0-1500mm Ultralight IV	90µm/0.0035"	4296.95	3585.00
54-110-580-0	0-80"/0-2000mm Ultralight IV	120µm/0.0048"	5920.18	5030.00
54-110-600-0*	0-100"/0-2500mm Ultralight IV	200µm/0.0078"	7154.59	6080.00
Cables				
54-115-526-0	Proximity USB Cable		\$136.07	\$122.00
54-115-527-0	Proximity Serial Cable		136.07	122.00
54-115-246-BT	USB Bluetooth Receiver		47.33	42.60

Buy 5, Get 1 FREE!

Ultra-Cal V Electronic Calipers

Buy 5 Standard 6"/150mm Electronic Calipers (54-100-067-1) and get one FREE

Fowler's Top-of-the-line BEST Caliper!



54-100-067-1

LIFETIME WARRANTY 



- 4-way measurement, inside, outside, depth and step. (6" & 8" models)
- Resolution: 0.0005"/.01mm
- Repeatability: 0.0005"/.01mm
- Direct inch/metric conversion
- Temperature range 5 to 40C° working; -20 to 60C° in storage

- Hardened stainless steel construction
- Direct RS-232 output
- Features Absolute/Relative Measuring Modes
- Thumbroll (6" model only)
- Includes case

Order No.	Description	Accuracy	Resolution	List Price	Sale Price
54-100-667-0	Buy 5 standard 6"/150mm Electronic Calipers (54-100-067-1), Get 1 FREE			\$992.95	\$742.50
54-100-067-1	6"/150mm	0.0008"/20µm	0.0005"/0.01mm	198.59	148.50
54-100-068-1	8"/200mm	0.0012"/30µm	0.0005"/0.01mm	472.77	352.00
54-100-069-1	12"/300mm	0.0012"/30µm	0.0005"/0.01mm	567.32	425.00
Bluetooth Models					
54-100-167-0	6"/150mm	0.0008"/20µm	0.0005"/0.01mm	\$330.99	\$290.00
54-100-168-0	8"/200mm	0.0012"/30µm	0.0005"/0.01mm	614.65	465.00
54-100-169-0	12"/300mm	0.0012"/30µm	0.0005"/0.01mm	819.47	545.00
Connectivity Kits					
54-115-526-0	Proximity cable with USB connection			\$136.07	\$122.00
54-115-527-0	Proximity cable with serial connection			136.07	122.00
54-115-246-BT	USB bluetooth receiver			47.33	42.60

Micron 0.00005" Electronic Caliper

Absolute Reading!



- Measuring range 6"/150mm
- High resolution, 0.00005"/0.001mm
- Accuracy up to 4", 0.0006"/0.015mm
- Accuracy above 4", 0.0012"/0.03mm
- Repeatability 0.00016"/0.004mm
- RS232 output
- Heavy duty frame (3.5mm)
- IP67 rated
- 5 year guarantee
- Includes case

Order No. 54-100-100-0

Sale \$345.00

List \$384.54

Prices & Specifications are subject to change without notice.

4" thru 12" Economy Digital Calipers

Absolute Reading!



54-100-000-2



- Absolute sensor technology
- Stainless steel frame
- Direct Inch/Metric conversion
- Accuracy: 0.001"/.02mm (4" & 6" models)
0.0015"/0.04mm (8" & 12" models)
- Resolution: 0.0005"/0.01mm
- Large easy-to-read LCD display
- Includes molded case



Order No.	Range	List Price	Sale Price
54-100-004-2	0 - 4"/100mm Caliper	\$99.81	\$59.85
54-100-000-2	0 - 6"/150mm Caliper	116.39	78.00
54-100-008-2	0 - 8"/200mm Caliper	136.68	107.50
54-100-112-2	0 - 12"/300mm Caliper	178.19	123.00
54-520-399-0	Data Cable	152.90	140.00

Water Resistant IP54 Electronic Calipers

Absolute Reading!



54-100-777-2



- Absolute sensor technology
- Water resistant to IP54 specifications
- Stainless steel frame
- Direct Inch/Metric conversion
- Accuracy: 0.001"/.02mm (6" models)
- Resolution: 0.0005"/.01mm
- Large easy-to-read LCD display
- 4-way measurement
- Includes molded case

Order No.	Range	List Price	Sale Price
54-100-777-2	0 - 6"/150mm Electronic IP54 Caliper	\$130.71	\$90.50
54-100-712-2	0 - 12"/300mm Electronic IP54 Caliper	190.14	133.00
54-520-399-0	Data Cable	152.90	140.00

Wireless Transmitter For Economy Calipers & IP54 Calipers

Wireless Transmitter allows wireless input from Economy and IP54 Economy Calipers (above) as well as Indi-Max Indicators (page 25). Input directly in to Excel, Word, Cad and Notepad.

- Includes 1 USB receiver and 1 Transmitter (good for 1 tool)
- Audible as well as LED indications when data is sent
- Input into Excel, Word, Notepad and CAD programs with the press of a button.
- Simple plug and play operation
- Includes 1 spare battery (CR2032), instructions, and storage case
- Wireless technology allows the use of the tool up to 60 feet away from a computer



AVAILABLE IN OCTOBER

Order No. 54-115-100-0

Sale \$89.50

List \$99.50



Light Line Electronic Calipers

Fowler Light Line, light weight, long range electronic calipers. A light weight frame with stainless steel jaws make this a great caliper that reduces fatigue from long periods of use. Both jaws are moveable enabling you to balance the caliper for a comfortable measuring position or adjust it to meet certain applications where space is limited.



- Light weight beam made of oxide coated aluminum with double inner prismatic guide ways for optimal guidance and sliding characteristics
- Stainless steel jaws, hardened and finely ground with knife edge top jaws
- Jaws are adjustable and exchangeable
- Spare jaws can be modified and exchanged with standard jaws for special applications
- Both jaws are moveable to any position on the main beam
- Electronics feature on/off, floating zero and direct in/mm conversion
- 0.0005"/.01mm resolution and repeatability
- Uses 1 LR44 silver oxide battery (1 spare included)
- Includes a fitted case, instructions and test certificate.
- Replacement jaws available in 3.5/4.9/5.9" (Special order)

Order No.	Range	Accuracy	List Price	Sale Price
54-112-012-0	NEW 0 - 12"/300mm	0.0015"/0.04mm	\$295.00	\$280.00
54-112-030-0	NEW 0 - 31"/800mm	0.002"/0.06mm	680.00	645.00

XTRA-RANGE® Electronic Calipers



- Hold feature
- Absolute/Incremental measurement
- Preset mode now includes offset for inside jaws
- All sizes feature fine adjustment screw
- Resolution: .0005"/.01mm
- Inch/metric conversion
- Includes molded case
- Internal measuring nibs for ID measurements

Shop-Hardened Case!



Order No.	Range	Jaw Depth	Accuracy	List Price	Sale Price
54-100-312-0	0 - 12"/300mm Caliper	3.5"	0.002"/0.04mm	\$205.59	\$149.00
54-100-024-1	0 - 24"/600mm Caliper	4"	0.003"/.08mm	299.42	223.00
54-100-042-1	0 - 40"/1000mm Caliper	4.9"	0.004"/10mm	1229.61	695.00

Prices & Specifications are subject to change without notice.

IP54 Dial Calipers

Dial Cal *Plus*



52-008-050-0



- IP54 rated against fluid and debris
- Measuring range 0-6"/0-150mm
- 4-way measurement
- 0.100" per revolution
- Thumbroll for fine adjustment
- Carriage lock screw
- Heavy duty stainless steel frame - 4mm thick
- Adjustable bezel with lock
- Includes fitted case

Order No.	Description	Accuracy	Graduation	List Price	Sale Price
52-008-050-0	0 - 6" - White-face	± 0.001"	0.001"	\$118.45	\$99.00
52-008-051-0	0 - 6" - Black-face	± 0.001"	0.001"	118.45	99.00
52-008-052-0	0 - 150mm - White-face	± 0.03mm	0.02mm	118.45	99.00

Premium Dial Caliper



- Four-way configuration for outside, inside, depth and step measurements
- 0-6" range
- 0.001" graduation
- Solid stainless steel construction
- Silky smooth movement throughout
- Dial hand completes one revolution per each 0.100"
- Thumbroll for rapid setting
- Knurled lock assures precise settings
- Includes fitted case

Order No. 52-008-006-2

Sale \$105.00

List \$138.64

Machinist Grade Dial Calipers



52-008-706-0



- 4-way measuring
- Solid stainless steel construction
- Silky smooth movement throughout
- 0.100"/2mm range per revolution
- 0.001"/.02mm reading dial face
- Tough shockproof gearing
- Supplied in shop-hardened case



52-008-707-0



Order No.	Range	Dial Face Color	List Price	Sale Price
52-008-706-0	0 - 6"	White	74.78	55.00
52-008-707-0	0 - 6"	Black	74.78	55.00
52-008-709-0	0 - 150mm	Yellow	74.78	55.00
52-008-708-0	0 - 8"	White	93.83	73.00

One-Rev Dial Calipers



52-008-004-0

- 4-way measurement
- 0.1" per revolution
- Covered rack
- Thumbroll, carriage lock and adjustable bezel
- Hardened stainless steel
- Includes case

Save
up to **50%**



Order No.	Range	Accuracy	Graduation	List Price	Sale Price
52-008-009-0	0 - 8"	± 0.0015"	0.001"	135.45	104.95
52-008-013-0	0 - 12"	± 0.002"	0.001"	173.45	85.95

Heavy Duty Dial Calipers with Cross Jaws



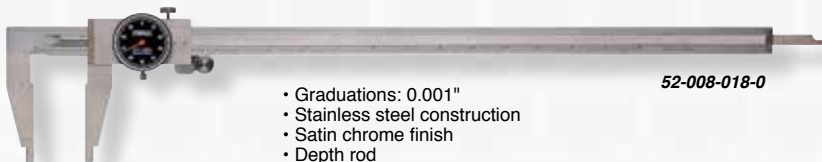
52-025-108-0

- Graduations: 0.001"
- Large 0.100" one-rev dial
- Depth rod
- 4-way measurement
- Cross-jaws for direct internal measurement
- Stainless steel, satin chrome finish
- Includes wood case



Order No.	Range	Jaw Length	List Price	Sale Price
52-025-108-0	8" Caliper	2.5"	\$136.06	\$78.00
52-025-112-0	12" Caliper	2.875"	197.86	129.00

Extended Range Dial Calipers



52-008-018-0

- Graduations: 0.001"
- Stainless steel construction
- Satin chrome finish
- Depth rod
- 0.500" internal measuring nibs
- Includes fitted case



Order No.	Range	Depth of Jaws	List Price	Sale Price
52-008-018-0	18" Caliper	3.125"	\$247.10	\$154.00
52-008-024-0	24" Caliper	3.375"	299.42	232.00

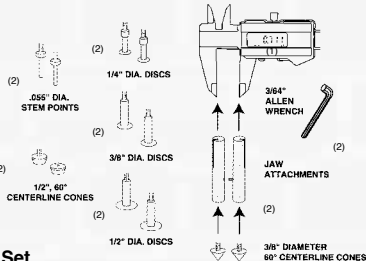
0-6" Dial Calipers



- 4-way measuring
- Covered rack
- 0.100" per revolution
- Dial graduation: 0.001"
- Accuracy: ± 0.001 "
- Hardened stainless steel rack
- Supplied in shop-hardened case

Order No.	Dial Face Color	List Price	Sale Price
52-008-007-0	White	\$89.71	\$50.45
52-008-005-0	Black	89.71	50.45

XTRA-VALUE CAL Centerline Accessory Set



Xtra-Value Electronic Caliper:

- Range: 6"/150mm
- Resolution: 0.0005"/0.01mm.
- Accuracy: 0.001"/0.02mm
- Absolute/incremental measurement
- True Inch/Metric conversion.
- 4-way measuring

Accessory Set

- 6 sets of interchangeable anvils.
- Allows measurement of hard to reach places including undercuts, grooves, webs and shoulders.
- Corrosion resistant black oxide plating.
- Includes fitted wooden case

Order No. 52-010-025-0

Sale \$89.00

List \$122.47

Vernier Calipers

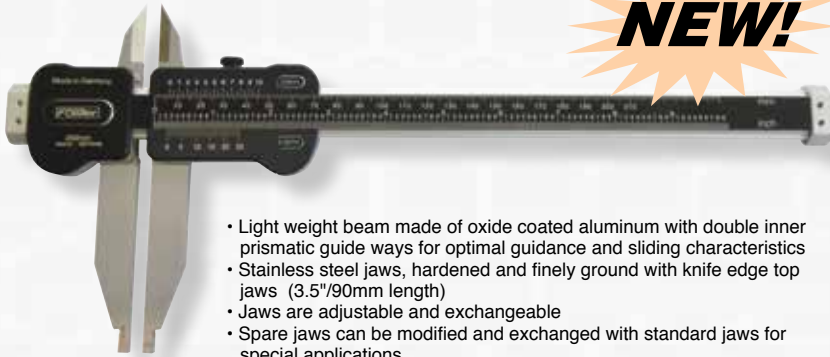


- Made of fully hardened stainless steel; microfine black graduations on a satin chrome finish for easy, precise reading.
- All models offer a depth rod which can be read directly from verniers.
- Measuring faces are ground and lapped for extreme accuracy.
- 4-way jaws for outside, inside, depth and step measurements.
- Extra-long vernier ensures accuracy.
- All sliding surfaces are raised to prevent defacement and wear of graduations.
- All models meet or exceed U.S. Federal specifications for accuracy.
- Includes case

Order No.	Range	Graduation	Depth of Jaws	List Price	Sale Price
Vernier Caliper with Fine Adjustment					
52-058-016-0	0-6"/0-150mm	0.001"/0.02mm	1.6"	\$48.72	\$38.50
Vernier Caliper with Thumb Lock					
52-059-016-0	0-6"/0-150mm	0.001"/0.02mm	1.6"	43.98	35.00

Light Line Vernier Calipers

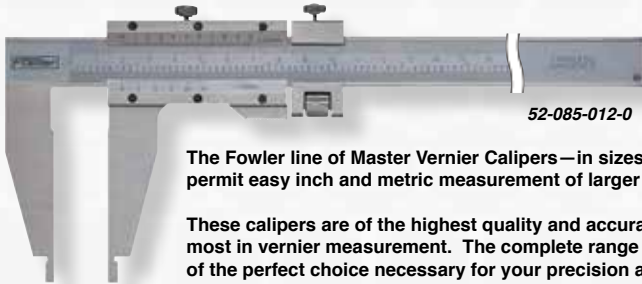
The Fowler Light Line Vernier Caliper is light weight, economical vernier caliper with stainless steel jaws and a parallax vernier scale for ease of reading.



- Light weight beam made of oxide coated aluminum with double inner prismatic guide ways for optimal guidance and sliding characteristics
- Stainless steel jaws, hardened and finely ground with knife edge top jaws (3.5"/90mm length)
- Jaws are adjustable and exchangeable
- Spare jaws can be modified and exchanged with standard jaws for special applications
- Parallax free vernier scale for ease of reading
- High contrast white numbering on black anodized frame
- Inch and metric graduations (0.001"/0.05mm)
- Made in Germany
- Includes fitted case
- Optional ranges and jaws available as special order

Order No.	Range	Accuracy	List Price	Sale Price
52-075-018-0	NEW 19"/500mm	0.001"/0.03mm	\$360.00	\$342.00
52-075-035-0	NEW 35"/900mm	0.0015"/0.04mm	650.00	617.00
52-075-150-0	NEW 6"/150mm - Jaw Set		100.00	95.00

Master Vernier Calipers



The Fowler line of Master Vernier Calipers—in sizes up to 60"/1500mm—permit easy inch and metric measurement of larger workpieces.

These calipers are of the highest quality and accuracy to ensure the utmost in vernier measurement. The complete range of sizes assures you of the perfect choice necessary for your precision applications.

- Satin chrome finish on all models.
- Hardened stainless steel throughout; ground and lapped for accuracy.
- Extra long vernier scales have wide spaced microfine graduations on satin chrome finish to ensure easy reading.
- Machine divided and engraved from master for exceptional accuracy.
- A raised sliding surface prevents wear and defacement of microfine graduations.
- Verniers are adjustable for wear.
- Open face design permits both vernier scales to be located on one side of the gage for both inside and outside measurements.
- All sizes permit inside and outside measurements.
- For larger workpieces, the long jaws permit greater accessibility and easier measurements.
- All sizes meet or exceed U.S. Federal specifications for accuracy.
- Includes case.

Order No.	Range	Graduation	Jaw Depth	List Price	Sale Price
52-085-012-0	12"/300mm	0.001"/0.02mm	3"	\$174.69	\$131.00
52-085-024-0	24"/600mm	0.001"/0.02mm	4"	370.70	275.00
52-085-040-0	40"/1000mm	0.001"/0.02mm	5-1/2"	867.36	645.00
52-085-060-0	60"/1500mm	0.001"/0.02mm	7-1/2"	2432.86	1750.00

Prices & Specifications are subject to change without notice.

Outside Inch Micrometers



52-253-001-1

- 0-1" Range
- Hammertone blue baked enamel finish.
- Microfine graduations on satin chrome finish and carbide tipped measuring faces
- Graduation: 0.001"
- Diameter of measuring faces: 0.256"
- Ratchet thimble for exact and repetitive readings.
- Positive locking lever
- Anvil & spindle hardened and precision ground with microlap finish on tips
- Includes a wrench and case

Order No.	Range	Accuracy	Thimble	List Price	Sale Price
52-253-001-1	0-1"	± 0.001"	Friction	\$33.60	\$20.00
52-253-101-1	0-1"	± 0.001"	Ratchet	33.60	20.00

Inch Outside Micrometers

with Decimal Equivalents on Frame



52-235-001-1



52-235-100-0

- Satin chrome finish forged steel frame
- Decimal equivalents on frame
- Sleeve and thimble have microfine black graduations
- Anvil and spindle precision ground, with microlapped ends
- Ultra-positive locking lever
- Smooth action ratchet style thimbles for exact and repetitive settings
- Wear-resistant carbide faces on anvil and spindle
- Diameter of measuring faces: 0.256"
- Flatness: .00003" and Parallelism: 0.00005"
- Includes case, spanner and standard for 1" and over

Order No.	Range	Accuracy	Graduation	List Price	Sale Price
52-235-001-1	0 - 1"	0.0001"	0.0001"	\$60.70	\$42.00
52-235-002-2	1 - 2"	0.0001"	0.0001"	73.70	51.00
52-235-003-2	2 - 3"	0.0001"	0.0001"	87.81	61.50
52-235-100-0	0 - 3" set	0.0001"	0.0001"	247.41	170.00

Outside Inch Micrometer Sets



52-215-003-1



- Hammertone blue baked enamel finish
- Microfine graduations on satin chrome finish and carbide tipped measuring faces
- Diameter of measuring faces: 0.256"
- Graduation: 0.0001"
- Flatness: 0.00003"
- Quick, easy zero adjustment on sleeve
- Positive lever locking clamp
- Spindle thread hardened, ground and lapped for ultimate accuracy
- Anvil & spindle hardened and precision ground with microlap finish on tips
- Includes a wrench and case



52-215-006-1
52-215-012-1 — Includes Wooden Case shown!
52-215-612-1

Order No.	Range	List Price	Sale Price
52-215-003-1	0 - 3" with standards and fitted Shop-Hardened case	\$173.04	\$114.00
52-215-004-1	0 - 4" with standards and fitted Shop-Hardened case	222.21	157.60
52-215-006-1	0 - 6" with standards and fitted Wooden Case	342.38	250.00
52-215-012-1	0 - 12" with standards and fitted Wooden Case	1028.38	616.50
52-215-612-1	6 - 12" with standards and fitted Wooden Case	705.38	419.00

Swiss-Style Micrometers



52-229-201-0

- 0.0001" reading
- Carbide measuring faces
- Insulated frame
- Ratchet thimble and locking lever
- Microfine graduations
- Sizes over 1" include standard
- Meets or exceeds Federal specifications
- Includes case

NEW!

Now available with optional N.I.S.T. Certification!

Order No.	Range	List Price	Sale Price
52-229-201-0	0 - 1"	\$45.14	\$33.40
52-229-201-C	0 - 1" with N.I.S.T Certificate		60.00
52-229-202-0	1 - 2"	52.86	39.10
52-229-203-0	2 - 3"	65.18	48.30
52-229-204-0	3 - 4"	74.82	55.30

Swiss Style Micrometer Sets

52-229-213-0



- .0001" reading (.01mm on metric set)
- Carbide measuring faces
- Ratchet thimble and locking lever
- Microfine graduations
- Sizes over 1" include standard
- Meets or exceeds Federal specifications

Order No.	Range	List Price	Sale Price
52-224-213-0	0 - 3"	\$162.74	\$120.40
52-224-214-0	0 - 4"	250.66	158.50
52-224-220-0	0 - 100mm	250.66	158.50

Digit Counter Micrometers



52-224-001-0

- Digital counter reads to .001"
- Resolution: .0001" (using vernier)
- Microfine graduations on satin chrome
- Carbide tipped measuring faces
- Positive locking nut on spindle
- Sizes over 1" include standard
- Includes case

Order No.	Range	List Price	Sale Price
52-224-001-0	0 - 1"	\$109.32	\$70.00
52-224-002-0	1 - 2"	114.84	73.50
52-224-003-0	2 - 3"	130.80	83.70
52-224-004-0	3 - 4"	143.88	92.00

Digit Counter Micrometer Sets

52-224-103-0



- Digital counter reads to .001"
- Resolution: .0001" (.01mm on metric set)
- Microfine graduations on satin chrome
- Carbide tipped measuring faces
- Ratchet thimble
- Positive locking nut on spindle
- Sizes over 1" supplied with standards

Order No.	Range	List Price	Sale Price
52-224-103-0	0 - 3"	\$363.36	\$232.60
52-224-104-0	0 - 4"	489.36	313.20
52-224-220-0	0 - 75mm	363.36	232.60

Electronic Coolant Resistant Micrometers



54-860-001-1



- Protected to IP54 specifications
- Large LCD display, 8.5mm
- Automatic switch off
- Resolution: 0.00005"/.001mm
- Carbide measuring faces
- Absolute & incremental modes
- Sizes over 1"/25mm include standard

Order No.	Range	List Price	Sale Price
54-860-001-1	0 - 1"/0 - 25mm	\$112.89	\$89.00
54-860-002-1	1 - 2"/25 - 50mm	130.71	103.00
54-860-003-1	2 - 3"/50 - 75mm	142.55	112.00
54-860-004-1	3 - 4"/75 - 100mm	166.35	131.00
54-860-005-1	4 - 5"/100 - 125mm	185.30	144.50
54-860-006-1	5 - 6"/125 - 150mm	207.96	163.00
Sets			
54-860-103-1	0 - 3"/0 - 75mm Set	371.32	285.00
54-860-106-1	0 - 6"/0 - 150mm Set	945.75	699.00

XTRA-VALUE Digi-Micrometers



54-815-001-2



- Protected to IP54 specifications
- Rugged steel design
- Large LCD Display
- Absolute & incremental modes
- Automatic switch off
- Resolution: 0.00005"/.001mm
- Direct RS232 output
- Carbide measuring faces
- Sizes over 1"/25mm include standard

Order No.	Range	Resolution	List Price	Sale Price
54-815-001-2	0 - 1"/0 - 25mm	0.00005"/0.001mm	\$148.53	\$105.00
54-815-002-2	1 - 2"/25 - 50mm	0.00005"/0.001mm	172.32	125.00
54-815-003-2	2 - 3"/50 - 75mm	0.00005"/0.001mm	190.14	140.00
54-815-103-0	0 - 3"/0 - 75mm Set	0.00005"/0.001mm	420.40	350.00

Electronic IP54 Micrometer Head

Absolute Reading!



Order No. 54-220-777-1

- Range: 0-1"/25mm
- Accuracy: 0.00012"/0.003mm
- Protected to IP54 specifications
- True inch/metric conversion
- Resolution: 0.00005"/0.001mm
- Large LCD display
- Friction thimble

Sale \$62.00

List \$96.20



Rapid-Mic Quick-Displacement Electronic Micrometers



54-815-030-0

WORLD'S FINEST Micrometer!

- Auto On/Off
- Position recall
- IP67 with or without data cable.
- Delrin quick displacement thimble
- Adjustable measuring force, 5N/10N
- Menu customizable with free software
- Non-rotating spindle, 10mm/spindle rotation
- USB output
- Carbide anvils
- Extended Range 0-30mm, 30-66mm and 66-102mm
- Blade anvils and speciality micrometers are available, contact Fowler Technical Department.

54-815-111-0



LIFETIME WARRANTY



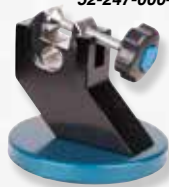
IP67

0-4" Range with
ONLY 3 Mics!

Order No.	Description	Max Error	List Price	Sale Price
54-815-030-0	0 - 1.18"/0 - 30mm	0.00012"/0.003mm	\$514.79	\$410.00
54-815-060-0	1.18" - 2.6"/30 - 66mm	0.00016"/0.004mm	761.74	695.00
54-815-100-0	2.6" - 4.0"/66 - 102mm	0.00020"/0.005mm	1065.29	945.00
BLUETOOTH MODEL				
54-815-130-0	0 - 1.18"/0 - 30mm	0.00012"/0.003mm	761.74	645.50
Set				
54-815-111-0	0 - 4"/0 - 102mm		2353.34	1995.00
Connectivity Kits				
Order No.	Description			
54-115-526-0	Proximity cable with USB connection		\$136.07	\$122.00
54-115-527-0	Proximity cable with serial connection		136.07	122.00
54-115-246-BT	USB bluetooth receiver		47.33	42.60

Micrometer Stands

52-247-000-0



- Adjust micrometer stand to any position.
- Hammertone blue baked enamel base.
- Provides a measuring position and angle for outside micrometers and other instruments.

52-247-005-0



**Save
up to 35%**

- Unique locking nut adjusts micrometer stand to any position for perfect use and viewing.
- Stand folds for storage.
- Hammertone silver baked enamel base.
- Provides a measuring position and angle for outside micrometers and other instruments.

XTRA MAG

52-247-010-0



Micrometer shown
not included.

- Holds standard 0-12" micrometers firmly to metal surfaces
- Use at machine centers, work, assembly and inspection stations, steel tables and shelves
- V-bottom for mounting on cylindrical surfaces
- On/Off magnet switch
- Blue enamel finish
- Base is 2.30" L x 1.20" W x 3.50" H



Order No.	Description	List Price	Sale Price
52-247-000-0	Adjustable Micrometer Stand	\$56.90	\$36.50
52-247-005-0	Folding Micrometer Stand	38.08	27.00
52-247-010-0	Magnetic Micrometer Stand	51.00	40.00

Prices & Specifications are subject to change without notice.

19

Fowler

TOOL-A-THON

Volume 16.3

Point Anvil & Spindle Micrometers

Absolute Reading!



54-860-661-0

- 30° pointed anvil and spindle for measuring small grooves, keyways, small flutes and hard to reach dimensions
- Protected to IP54 specifications
- Large LCD Display, 8.5mm
- Automatic switch off
- Resolution: 0.00005"/0.001mm
- Carbide measuring faces
- Absolute & incremental modes
- Sizes over 1"/25mm include standard



Order No.	Range	Resolution	Accuracy	List Price	Sale Price
54-860-661-0	0 - 1"/0 - 25mm	0.00005"/0.001mm	0.00016"/0.004mm	\$165.90	\$141.00
54-860-662-0	1 - 2"/25 - 50mm	0.00005"/0.001mm	0.00016"/0.004mm	181.50	154.20
54-860-663-0	2 - 3"/50 - 75mm	0.00005"/0.001mm	0.0002"/0.005mm	203.00	172.50
54-860-664-0	3 - 4"/75 - 100mm	0.00005"/0.001mm	0.0002"/0.005mm	220.80	187.60

Point Spindle & Blade Anvil Micrometers

Absolute Reading!



54-860-671-0

- 60° pointed spindle with blade anvil for grooves and hard to reach dimensions
- Protected to IP54 specifications
- Large LCD display, 8.5mm
- Automatic switch off
- Resolution: 0.00005"/0.001mm
- Hardened steel measuring face
- Absolute & incremental modes
- Sizes over 1"/25mm include standard



Order No.	Range	Resolution	Accuracy	List Price	Sale Price
54-860-671-0	0 - 0.8"/0 - 20mm	0.00005"/0.001mm	0.00016"/0.004mm	\$138.40	\$117.00
54-860-672-0	1.0 - 1.8"/25 - 45.7mm	0.00005"/0.001mm	0.00016"/0.004mm	155.60	132.20
54-860-673-0	2.0 - 2.8"/50 - 71mm	0.00005"/0.001mm	0.0002"/0.005mm	176.20	149.70
54-860-674-0	3.0 - 3.8"/75 - 96.5mm	0.00005"/0.001mm	0.0002"/0.005mm	198.70	168.90

Electronic IP54 Ball Anvil Micrometers

Absolute Reading!



54-860-113-1



- Ball anvil/flat spindle for measuring tubes or the insides of holes to outer edges
- Protected to IP54 specifications
- Large LCD display, 8.5mm
- Automatic switch off
- Resolution: 0.00005"/0.001mm
- Hardened steel measuring face
- Absolute & incremental modes
- Sizes over 1"/25mm include standard

Order No.	Range	Resolution	Accuracy	List Price	Sale Price
54-860-113-1	0 - 1"/0 - 25mm	0.00005"/0.001mm	0.00016"/0.004mm	\$114.40	\$97.20
54-860-114-1	1 - 2"/25 - 50mm	0.00005"/0.001mm	0.00016"/0.004mm	134.00	113.90
54-860-115-1	2 - 3"/50 - 75mm	0.00005"/0.001mm	0.0002"/0.005mm	153.90	130.80
54-860-116-1	3 - 4"/75 - 100mm	0.00005"/0.001mm	0.0002"/0.005mm	173.40	147.30

Electronic IP54 Ball Anvil & Spindle Micrometers

Absolute Reading!



54-860-211-1



- Ball anvil and spindle for measuring special curved surfaces
- Protected to IP54 specifications
- Large LCD display, 8.5mm
- Automatic switch off
- Resolution: 0.00005"/0.001mm
- Hardened steel measuring face
- Absolute & incremental modes
- Sizes over 1"/25mm include standard

Order No.	Range	Resolution	Accuracy	List Price	Sale Price
54-860-211-1	0 - 1"/0 - 25mm	0.00005"/0.001mm	0.00016"/0.004mm	\$124.70	\$106.00
54-860-212-1	1 - 2"/25 - 50mm	0.00005"/0.001mm	0.00016"/0.004mm	143.90	122.30
54-860-213-1	2 - 3"/50 - 75mm	0.00005"/0.001mm	0.0002"/0.005mm	164.40	139.70
54-860-214-1	3 - 4"/75 - 100mm	0.00005"/0.001mm	0.0002"/0.005mm	185.80	157.90

Prices & Specifications are subject to change without notice.

Economy Depth Micrometers



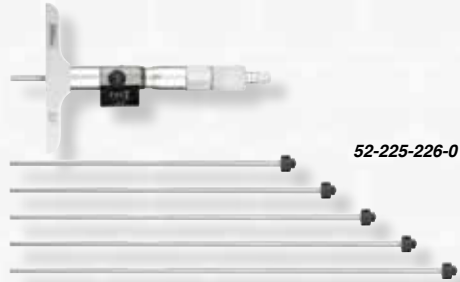
52-225-116-0

- Satin chrome finish
- Base surface hardened, ground & lapped
- Ratchet thimble
- Locking clamp
- 0.001" Graduation
- Rod diameter: 0.176"
- Includes shop-hardened case.

Order No.	Range	Graduation	Base	List Price	Sale Price
52-225-110-0	0 - 4"	0.001"	2.5"	\$129.92	\$113.00
52-225-112-0	0 - 6"	0.001"	2.5"	160.83	\$137.00
52-225-114-0	0 - 4"	0.001"	4"	140.34	\$122.00
52-225-116-0	0 - 6"	0.001"	4"	164.42	\$142.00

Digit Counter Depth Micrometers

- Easy-to-read digit counter
- Microfine 0.001" graduations
- 4" base constructed of tool steel, hardened and ground
- Satin chrome finish
- Ratchet thimble
- Locking clamp
- Rod diameter: 0.176"
- Includes wrench and fitted case



52-225-226-0

Order No.	Range	Graduation	Base	List Price	Sale Price
52-225-176-0	0 - 6"	0.001"	2.5"	\$186.24	\$161.00
52-225-226-0	0 - 6"	0.001"	4"	192.60	\$167.00

Depth Micrometer Checker

Fowler's setting masters are quick, easy and extremely accurate. Each comes with a certificate of calibration and a wood case. Save time and money by calibrating your own measuring tools.

- Ideal for quick, easy calibration and zero setting of depth micrometers.
- Range: 1 - 6"
- Graduation: 1"
- Accuracy: ± 0.000120 "
- Reference block: $1" \pm 0.000020$ "



Order No. 53-813-005-0

Sale \$1375.00 List \$1538.31

Light-Line Digital Depth Gages

Light Line Digital Depth Gage Kit with Interchangeable bases. A light weight depth gage with 3 easily interchanged bases that will cover a variety of depth measuring applications. With an assortment of measuring contacts enabling the measurement of depths, gaps, grooves, steps and many other applications.

- Light weight beam made of oxide coated aluminum with double inner prismatic guide ways for optimal guidance and sliding characteristics
- Bases made of hard anodized aluminum, which are easily interchanged.
- Includes three base attachments: 150/300/450mm
- Includes two contact points (rotatable by 90 degrees: 3/5mm)
- Electronics feature on/off, floating zero and direct in/mm conversion
- 0.0005"/.01mm resolution and repeatability
- Made in Germany
- Uses 1 LR44 silver oxide battery (1 spare included)
- Includes a fitted case, instructions, 2 spare base screws, 2 hex wrenches and test certificate.



54-136-012-0

Order No.	Range	Accuracy	List Price	Sale Price
54-136-012-0	NEW 0 - 12"/300mm	0.0015"/0.04mm	\$460.00	\$435.00
54-136-030-0	NEW 0 - 31"/800mm	0.0024"/0.06mm	780.00	740.00

Light-Line Digital Depth Gages with adjustable base

The Light Line Depth Gage features a 14" multi-position base making it possible to mount the gage at three positions along the length of the base itself. Right, Center and Left. This makes the gage ideal for measuring across a wide opening while being able to locate the measuring portion at either side of the opening. It may also be used without the optional base for distances of up to 6" across an opening. The 12" model features a 0.150" measuring rod and the 31" model features a 0.230" measuring rod. Both are supplied with a standard ball contact and a disk shaped contact for various applications.

- Light weight beam made of oxide coated aluminum with double inner prismatic guide ways for optimal guidance and sliding characteristics
- Bases made of hard anodized aluminum, which are easily interchanged.
- Includes 1 base attachment 350mm (14")
- Optional bases are available (550/750mm)
- Includes two contact points (1 ball and 1 disk)
- Electronics feature on/off, floating zero and direct in/mm conversion
- 0.0005"/.01mm resolution and repeatability
- Made in Germany
- Uses 1 LR44 silver oxide battery (1 spare included)
- Includes fitted case, instructions, 2 base screws, hex wrench and test certificate.
- Shorter and longer measuring ranges available as special order



54-136-512-0

Order No.	Range	Accuracy	List Price	Sale Price
54-136-512-0	NEW 0 - 12"/300mm	0.0015"/0.04mm	\$640.00	\$605.00
54-136-535-0	NEW 0 - 31"/800mm	0.0024"/0.06mm	1400.00	1330.00
54-136-621-0	NEW 21"/550mm Base		325.00	307.00
54-136-637-0	NEW 29.5"/750mm Base		480.00	455.00

Prices & Specifications are subject to change without notice.

23

Fowler

TOOL-A-THON

Volume 16.3

X-DEPTH 22" 0-22" Electronic Depth Gauge



- 0-1" travel electronic indicator
- Zero reset at any position
- On/off button
- Relative/absolute measuring
- Bottom surface of the base is hardened, ground & lapped
- Full 22" range
- Resolution 0.0005"/.01mm
- ± 0.001" accuracy
- ABS/Incremental measuring
- 4" Base
- Includes 2 extra points for small hole applications; one 0.078" dia. x 1" long and one needle point x 1" long
- Includes shop-hardened case

Order No. 54-125-777-0

Sale \$167.50

List \$243.49

INDI-X^{blue} Electronic Indicators

Available in .5"/12.5mm & 1"/25mm ranges!

INCH • METRIC • FRACTION

- Direct Inch/Metric Conversion
- Auto Off feature
- 2-1/4" dial face
- Lugback and 3/8" stem mountings
- Resolution 0.0005"/0.01mm
- Tolerance function
- **Absolute/incremental reading**
- Floating zero
- Carbide tipped point

54-520-260-0



54-520-250-0



Carbide-tipped point!

Save 25%

Low Cost, High Quality, Multi-Function Indicators

Order No.	Description	List Price	Sale Price
54-520-250-0	1"/25mm Indi-X Blue Electronic Indicator	\$99.70	\$69.00
54-520-260-0	1"/25mm/64ths Indi-X Blue Inch-Metric-Fraction Electronic Indicator	102.07	71.00
54-520-255-0	0.5"/12.5mm Indi-X Blue Electronic Indicator	92.60	61.00

Ceramic Dial Gage Stand

- Measuring range 8"/200mm
- 4" x 4" working area
- State of the art ceramics provide durability and micro flatness.
- Serrated working surface provides a stable and accurate reference base.
- Chrome column with rack and pinion adjustment
- Accepts all electronic and standard dial gage and electronic probes 3/8" or 8mm mounting
- Flatness: 0.00015"



(Indicator not included with stand)

Order No. 54-618-578-0

Sale \$575.00

List \$779.50

Granite Dial Gage Stand

- 6" x 6" x 2" granite base
- Positive locking screw
- Sturdy and compact with extreme stability.
- Fine adjustment knob for zero setting
- Column height is 8"
- Accepts all lug-back indicators
- Flatness: 0.00005"



(Indicator not included with stand)

Order No. 52-580-030-0

Sale \$79.00

List \$116.55

INDI-MAX

Electronic Indicators

- Direct Inch/Metric Conversion
- IP54 Coolant & fluid resistant
- Auto Off feature
- 2-1/4" dial face
- 3/8" stem - 4-48 thread
- Resolution 0.00005"/.001mm
- Accuracy: 0.00016"/.004mm (to 1")
- Tolerance indicators
- Absolute/incremental reading
- Lugback supplied on 1/2" model.
- Lugbacks for 1" and 2" models, 52-525-605-0
- Floating zero
- Carbide tipped point

**Save
25%**

Protected to:
IP54
COOLANT & FLUID
RESISTANT

Carbide-tipped points!



0-5"



0-1"



0-2"

Order No.	Description	List Price	Sale Price
54-520-305-0	0.5"/12.5mm Indi-Max Electronic Indicator with point set	\$338.90	\$240.00
54-520-310-0	1"/25mm Indi-Max Electronic Indicator with point set	380.10	265.00
54-520-320-0	2"/50mm Indi-Max Electronic Indicator with point set	493.40	350.00
52-525-605-0	Lugback for 1" and 2" models	16.70	12.25
54-520-399-0	Data cable	152.90	140.00
54-115-100-0	NEW Wireless Transmitter Kit - See Page 10	99.50	89.50

Prices & Specifications are subject to change without notice.

Premium Dial Indicators



52-520-135-0

NEW!



52-520-110-1



52-520-110-2

Calibration Certificate

Part No: 52-520-135-1 Tool Description: Dial Indicator
 Serial No: 61015 Range: 1"
 Test Std: ASME B89 Tool Resolution: .001"
 Temp: 20°C Humidity: 50%
 Visual Ins: Pass Function Inspection: Pass

Measurements				
Nominal Size	Tolerance	+/- Deviation	Pass/Fail	
.157"	.001"	0	P	
.157"	.001"	0	P	
.157"	.002"	0	P	
.157"	.002"	0	P	
.157"	.002"	0	P	
.157"	.002"	0	P	
.157"	.002"	0	P	
.157"	.002"	+0.001	P	
.157"	.002"	+0.001	P	
.157"	.002"	+0.001	P	
1.0"	.002"	+0.001	P	

Reference: Gage Block Set: 53-672-081-0 Serial Number: 122230
 MSJ Traceability Number: 8276765

Field Office: Chicago, IL
 Calibration Date: 04-22-2014
 Inspector: [Name]
 Purchaser: [Name]

- Popular AGD 2 series
- Various graduations available
- Jet console-black dial face with orange hand (52-520-110-1)
- Various ranges available
- Includes tolerance markers
- Solid steel housing
- Carbide contact point
- Various NIST certificate of calibration

52-520-120-0

3 year Warranty
with N.I.S.T Certificate of Calibration

Order No.	Range	Graduation	Reading	Balanced Reading	Dial Color	List Price	Sale Price
52-520-110-1	NEW 1"	0.001"	0 - 100	—	Black Face	\$87.55	\$65.00
52-520-110-2	NEW 1"	0.001"	0 - 100	—	White Face	87.55	65.00
52-520-105-0	NEW 0.500"	0.001"	0 - 100	0 - 50 - 0	White Face	82.81	62.00
52-520-120-0	NEW 2"	0.001"	0 - 100	0 - 50 - 0	White Face	135.45	101.50
52-520-129-0	NEW 1"	0.0005"	0 - 50	0 - 25 - 0	White Face	105.88	79.00
52-520-135-0	NEW 0.05"	0.0001"	0 - 10	0 - 5 - 0	White Face	151.72	113.50
52-520-125-0	NEW 0.250"	0.0005"	0 - 50	0 - 25 - 0	White Face	115.57	86.50
52-520-500-0	NEW 25mm	0.01mm	0 - 100	0 - 50 - 0	White Face	133.28	99.00

X-PROOF® IP54 Shockproof Dial Indicators



52-520-444-1



52-520-250-1

BEST VALUE!
IP54 Shockproof indicator available!

Protection Includes:

- Rubber bellows on stem
- O-ring seal on safety cap
- O-ring protection for bezel and rotating dial
- Sealed back plate

Specifications:

- Robust, shockproof design
- Travel: 1"
- Reading: 0.001"
- Continuous reading: 0-100
- Tolerance markers
- AGD Group 2, 2-1/4" dia.
- Lugback and carbide point



52-520-450-0

52-520-455-0

Order No.	Range	Graduation	Reading	Contact Point	List Price	Sale Price
52-520-450-0	1"	0.001"	0 - 100	4 - 48 (3/8" stem)	\$73.65	\$47.50
52-520-455-0	1"	0.001"	0 - 100	4 - 48 (3/8" stem)	79.62	51.00
52-520-250-1	0.40"	0.0005"	0 - 50 - 0	M2.5 (8mm stem)	150.28	109.00
52-520-444-1	0.40"	0.001"	0 - 100	M2.5 (8mm stem)	144.30	99.00

LIFETIME WARRANTY

We are so confident that these Fowler-Sylvac Mark VI electronic indicators are the most accurate, most dependable, best made products you can buy, we are extending the warranty to last a lifetime!

*No Gimmicks
No Hurdles
No Nonsense*

Quality, accuracy, dependability, world-class customer service and now a real Lifetime Warranty!

Mark VI Electronic Indicators

- Robust construction
- Water and coolant resistant
- Protection class IP54
- Repeatability: 2µm
- Output: Proximity/Power - USB/RS232/digimatic/Wireless
- Battery life: 10,000 hours of operation
- Menus customizable with free software
- Wide range of functions (MIN/MAX/DELTA, TOL, Factor, Preset, Auto Off, etc)
- Aluminum housing
- Bezel rotates 270°
- Large display with LED tolerance indicators
- Includes lug back



54-530-535-0



Order No.	Description	Maximum Error	Resolution	List Price	Sale Price
54-530-125-0	0 - 0.500"/12.5mm	0.0004"/0.01mm	0.0005"/0.01mm	\$430.75	\$387.50
54-530-135-0	0 - 0.500"/12.5mm	0.00012"/0.003mm	0.00005"/0.001mm	535.81	482.00
54-530-145-0	0 - 1"/25mm	0.0004"/0.01mm	0.0005"/0.01mm	491.64	442.00
54-530-155-0	0 - 1"/25mm	0.00016"/0.004mm	0.00005"/0.001mm	588.34	529.50
54-530-175-0	0 - 2"/50mm	0.00019"/0.005mm	0.00005"/0.001mm	1113.64	1002.00
Bluetooth					
54-530-335-0	0 - 0.500"/12.5mm	0.00012"/0.003mm	0.00005"/0.001mm	682.89	614.60
54-530-355-0	0 - 1"/25mm	0.00016"/0.004mm	0.00005"/0.001mm	730.22	657.20
Accessories					
54-115-246-BT	USB Bluetooth Receiver			47.33	42.60
Analog Display					
54-530-535-0	0 - 0.500"/12.5mm	0.00012"/0.003mm	0.00005"/0.001mm	619.85	557.80
54-530-555-0	0 - 1.00"/25mm	0.00016"/0.004mm	0.00005"/0.001mm	677.69	608.00

Prices & Specifications are subject to change without notice.



Fowler-Bowers Bluetooth XTH3 Holematic Pistol Grips

FREE Tablet
with the purchase of
ANY Bluetooth Set!



NEW!



NEW Larger Display!
NEW Ergonomic Design!
NEW Four Presets!

BEST Results in Gage R & R Studies

- Larger (10mm) easier to read swivel display
- Self centering heads
- USB connectivity and bluetooth
- Four preset memories
- Fixed anvils
- Resolution: 0.00005" / .001mm
- Range 0.080" – 12" (2 – 300mm)
- To reduce hand fatigue, the travel of the Holematic trigger is adjustable for minimum over travel
- Tungsten carbide measuring faces on all 3-point heads from 0.5" (12.5mm) and up.
- Heads with special anvils available for threads, splines, slots, etc.
- Sizes over 0.500" (12.5mm) feature blind bore capability
- Setting rings included in all sets
- Includes UKAS certificates for all pistol grip, heads and rings
- **Contact the Fowler Technical Department for special anvil applications.**



*Bluetooth sets at Non-Bluetooth set prices

Complete Range Sets

Order No.	Range	Includes	List Price	Sale Price
54-567-009-BT	NEW 0.080" - 0.250"/2 - 6mm	5 heads, 1 handle, 3 rings	\$6016.98	\$4750.00
54-567-010-BT	NEW 0.250" - 0.375"/6 - 10mm	2 heads, 1 handle, 1 ring	2359.26	1845.00
54-567-020-BT	NEW 0.375" - 0.750"/10 - 20mm	3 heads, 1 handle, 2 rings	2760.12	2185.00
54-567-050-BT	NEW 0.750" - 2" /20 - 50mm	3 heads, 1 handle, 2 rings	3563.88	2870.00
54-567-100-BT	NEW 2 - 4"/50 - 100mm	3 heads, 1 handle, 2 rings	3966.78	3210.00
54-567-105-BT	NEW 4 - 6"/100 - 150mm	2 heads, 1 handle, 1 ring	3563.88	2870.00
54-567-110-BT	NEW 6 - 8"/150 - 200mm	2 heads, 1 handle, 1 ring	4704.2	3840.00
54-567-200-BT	NEW 4 - 8" /100 - 200mm	4 heads, 1 handle, 2 rings	7446.00	6170.00
54-567-210-BT	NEW 0.750" - 4" /20 - 100mm	6 heads, 1 handle, 4 rings	5799.72	4770.00
54-567-620-BT	NEW 0.250" - 0.750" 76 - 20mm	5 heads, 1 handle, 3 rings	3289.50	2635.00

Connectivity Kits

Order No.	Description		
54-115-526-0	Proximity cable with USB connection	\$136.07	\$122.00
54-115-527-0	Proximity cable with serial connection	136.07	122.00
54-115-246-BT	USB bluetooth receiver	47.33	42.60

Fowler-Bowers XT-Series Holemikes



The Fowler-Bowers range of mechanical two and three point bore micrometers are now available as XT extended travel holemikes, allowing a wide measurement range without the need to interchange anvils.

SPECIAL DEAL!



FREE
 Free Special
 Sylvac Ultra Cal IV
 with Holemike purchase!
 \$175.00 Value
 (features round depth rod)

Special Features:

- Graduations 0.00025"
- 3-pt contact with tungsten carbide measuring anvils above .5"
- Blind bore measuring above .5"
- Ratchet stop for consistent measuring
- Non-removable anvils
- Extensions available for deep measuring
- Setting rings included in all sets
- Includes UKAS certificates for all Holemikes and setting rings
- Every gage is individually serialized



Order No.	Range	Grads.	Accuracy	Meas. Depth	Ring Included	List Price	Sale Price
52-255-310-0	0.250" - 0.312"	0.00025"	0.00015"	2.28"	0.312"	\$709.21	\$531.00
52-255-311-0	0.312" - 0.375"	0.00025"	0.00015"	2.28"	0.312"	656.68	492.00
52-255-312-0	0.375" - 0.500"	0.00025"	0.00015"	2.28"	0.5"	656.68	492.00
52-255-313-0	0.500" - 0.625"	0.00025"	0.00015"	2.44"	0.5"	656.68	492.00
52-255-314-0	0.625" - 0.750"	0.00025"	0.00015"	2.44"	0.75"	673.40	505.00
52-255-315-0	0.750" - 1"	0.00025"	0.00015"	2.60"	0.75"	739.60	554.00
52-255-316-0	1" - 1.375"	0.00025"	0.00015"	2.60"	1.375"	1053.76	790.00
52-255-317-0	1.375" - 2"	0.00025"	0.00015"	3.15"	1.375"	1078.96	809.00
52-255-318-0	2" - 2.625"	0.00025"	0.0002"	3.15"	2.625"	1287.04	965.00
52-255-319-0	2.625" - 3.250"	0.00025"	0.0002"	3.15"	2.625"	1298.56	973.00
52-255-320-0	3.250" - 4"	0.00025"	0.0002"	3.94"	3.25"	1620.07	1215.00

Fowler-Bowers XT-Series Holemike Sets

Order No.	Range	Includes	List Price	Sale Price
52-255-565-0	0.250" - 0.375"	2 heads, 2 handles, 1 ring	\$1574.88	\$1181.00
52-255-665-0	0.375" - 0.750"	3 heads, 3 handles, 2 rings	1793.36	1345.00
52-255-775-0	0.750" - 2"	3 heads, 3 handles, 2 rings	2817.75	2113.00
52-255-885-0	2" - 4"	3 heads, 3 handles, 2 rings	3820.00	2865.00

Prices & Specifications are subject to change without notice.

HOLDXTEC Holding Systems

- All accept 3/8" indicators
- Mag base and HOLD-TEC with fine adjust also accepts 8mm indicators
- All have dovetail clamps for test indicators
- Mag base features 2 fine adjusts making it a **6-Axis Mag Base**
- HOLD-TEC can be mounted in drill chucks, collets, dial gage stands with 8mm mount diameter to make a quick transfer stand
- Mag base has 180 lb. pull
- Adjust to any position
- Powerful On/Off mag base
- Central locking system



52-585-085-0

MACHINIST GRADE!
For MAXIMUM Precision

FREE Test Indicator (52-568-005-0) with Any HOLD-TEC Purchase

Order No.	Description	List Price	Sale Price
52-585-085-0	HOLD-Tec Mag Base with Double Fine Adjust	\$156.25	\$98.00
52-565-036-0	HOLD-Tec without Fine Adjust	87.76	55.00
52-565-038-0	HOLD-Tec with Fine Adjust	95.38	60.00

AGD or INDI-X blue Indicator & Stand Combo

Stand (52-580-030-0):

- 6" x 6" x 2" granite base
- Positive lock screw
- Fine adjustment knob for zero setting
- Column height is 8"
- Microscrew fingertip control

Black Face Indicator (52-520-109-0):

- Reading: 0.001"
- 1" Travel
- AGD Group 2
- Dial diameter: 2-1/4"
- Continuous reading: 0 - 100

Indi-X Blue Electronic Indicator (54-520-250-0):

- Direct Inch/Metric Conversion
- 1"/25mm travel
- Lugback and 3/8" stem mountings
- Resolution 0.0005"/.01mm
- Tolerance indicators
- Absolute/incremental reading
- Floating zero
- Carbide tipped point



Order No.	Description	List Price	Sale Price
52-580-109-0	Black Face Indicator and Stand Combo	\$190.55	\$136.00
54-580-250-0	Indi-X Blue Electronic Indicator and Stand Combo	229.79	175.00

CHROME FLEX MAG SET

with Anyform Base and X-PROOF Indicator



52-585-245-0

Flex Arm Anyform Mag Base features:

- Corrosion resistant chrome plated flex arm
- Holds rigidly in almost any position.
- 40 lb. pull magnet
- Versatile—70 steel segments work like a contour gage to fit the mag base securely to practically any shape or form

X-Proof IP54 Indicator features:

Specifications:

- Robust, shockproof design
- Travel: 1"
- Reading: .001"
- Continuous reading: 0-100
- Tolerance markers
- AGD Group 2, 2-1/4" dia.
- Lugback and carbide point

Protection Includes:

- Rubber bellows on stem.
- O-ring seal on safety cap.
- O-ring protection for bezel and rotating dial
- Sealed back plate



All in a shop-hardened case.

Order No.	Description	List Price	Sale Price
52-585-245-0	Chrome Flex Mag w/Anyform Base and X-Proof Indicator Set - Whiteface	\$185.00	\$150.00
52-585-255-0	Chrome Flex Mag w/Anyform Base and X-Proof Indicator Set - Blackface	185.00	\$150.00

Fine Adjust Mag Base Sets

With **INDI-X Blue** Electronic Indicator or AGD White Face Indicator

Magnetic Base (52-585-005-0):

- 85 lb. pull
- Fine adjustment
- V-bottom base

Included Magnetic Indicator Back for mounting to most metal surfaces!



Magnetic Indicator (52-585-495-0):

- Use for positioning the indicator on most metal surfaces
- Protective coating

Indi-X Blue Indicator (54-520-250-0):

- Direct Inch/Metric Conversion
- 1"/25mm travel
- Auto Off feature
- 2-1/4" dial face
- Lugback and 3/8" stem mountings
- Resolution .0005"/.01mm
- Tolerance indicators
- Absolute/incremental reading
- Floating zero
- Carbide tipped point with 4-48 thread



54-585-075-0



52-585-125-0



AGD Indicator (52-520-110-0):

- AGD Group 2
- Dial diameter: 2-1/4"
- Travel: 1"
- Reading: .001"
- Continuous reading: 0.100"
- Carbide tipped point with 4-48 thread

Order No.	Description	List Price	Sale Price
52-585-125-0	Fine Adjust Mag Base with AGD Dial Indicator Set	\$159.34	\$119.00
54-585-075-0	Fine Adjust Mag Base with Indi-X Blue Electronic Indicator Set	208.27	160.00

Prices & Specifications are subject to change without notice.

Back Plunger Dial Indicator Set

- Dependable, easy to use & overcomes problems in the workshop.
- Set includes G clamp, tool post base, vertical rod, extension rod, 3/16" standard anvil, 5/16" anvil, thumb clamp and swing arm attachment. Back Plunger indicator is brass bearing.
- Swing arms attachment turns it into a test indicator
- Complete in shop-hardened case



Order No. 52-570-000-0

Sale \$99.⁰⁰

List \$119.43

XTEST X-Test Indicator & Accessory Combo Kits

Each Combo Kit Includes:

- X-Test Dial Test Indicator (see above)
- Axial support
- Height gage bar with clamp
- Adaptor sleeve: 5/32" to 3/8"
- Contact point case
- Contact point wrench
- Complete in "Shop Hardened" case.



52-562-110-0

Order No.	Description	Graduations	List Price	Sale Price
52-562-100-0	52-562-001-0 w/accessories	0.0005"	\$183.13	\$155.00
52-562-110-0	52-562-002-0 w/accessories	0.0005"	183.13	155.00
52-562-120-0	52-562-003-0 w/accessories	0.001"	183.13	155.00

Test Indicator & Xtra-Mag Set

XTRA MAG

Mag Base (52-585-000-0):

- 2 universal ball sockets
- Microfine adjustment screw
- 3-9/16" extension arm
- Dovetail mounting

Test Indicator: (52-562-778-0):

- Range: .030"
- Reading: 0-15-0
- Jeweled movement
- Graduation: .0005"
- Auto-reversing
- .080" diameter point

Virtually unlimited positioning as a Universal Base!



Order No. 52-585-100-0

Sale \$132.⁵⁰

List \$164.59



XTEST X-Test Indicators

TWICE the range of most indicators!

- Jeweled movement
- Revolution counter
- Easy-to-read tilted dial
- Automatic reversal
- 210° Swivel arc
- 5/32" stem
- Tungsten carbide point: .080"
- Range: .060" inch model
- Range: 1.6mm metric model



52-562-001-0

52-562-002-0



Order No.	Description	Graduations	Dial Diameter	Dial Reading	List Price	Sale Price
52-562-001-0	X-Test Indicator	0.0005"	1-1/2"	0 - 15 - 0	\$124.73	\$106.00
52-562-002-0	X-Test Indicator	0.0005"	1"	0 - 15 - 0	124.73	106.00

Test Indicators

All Fowler Test Indicators include bi-directional constant clockwise rotation, automatic reversal, three dovetail mountings, jeweled movement, two dovetail clamps and a molded case.



52-562-775-0



52-562-778-0



Order No.	Face Color	Total Range	Dial Reading	Graduation	Dial Diameter	Point Length	List Price	Sale Price
52-562-774-0	white	0.030"	0 - 15 - 0	0.001"	1"	1/2"	\$111.76	\$68.50
52-562-778-0	black	0.030"	0 - 15 - 0	0.0005"	1"	1/2"	118.76	72.50
52-562-775-0	white	0.030"	0 - 15 - 0	0.0005"	1"	1/2"	118.76	72.50
52-562-776-0	white	0.030"	0 - 15 - 0	0.0005"	1-1/2"	1/2"	124.22	77.00
52-562-780-0	black	0.030"	0 - 15 - 0	0.0005"	1-1/2"	1/2"	124.22	77.00



52-562-784-0



Order No.	Face Color	Total Range	Dial Reading	Graduation	Dial Diameter	Point Length	List Price	Sale Price
52-562-782-0	black	0.020"	0 - 10 - 0	0.0005"	1"	1-7/16"	122.36	95.00
52-562-783-0	white	0.020"	0 - 10 - 0	0.0005"	1-1/2"	1-7/16"	122.36	95.00
52-562-784-0	black	0.020"	0 - 10 - 0	0.0005"	1-1/2"	1-7/16"	122.36	95.00

Prices & Specifications are subject to change without notice.

Girod TAST Indicators

The ultimate in Swiss workmanship, Fowler-Girod Indicators are internationally respected as "The Best."

- Monobloc body design has 7 fine jeweled bearings
- Rugged anti-magnetic one-piece housing
- Auto-reverse mechanism
- Carbide contact points
- Dovetails supplied at top, front and back for proper set-up
- Adjustable bezel and dial easily set and reset to zero
- Total measuring range 0.060" (52-562-252-0, 52-562-452-0 only)
- The convenient revolution counter indicates the total number of revolutions for error-free readings (52-562-253-0, 52-562-453-0 only)
- Price includes indicator, fitted case, carbide contact points (see chart), and two dovetail clamping stems: 7/32" and 1/4" diameter.



Order No.	Dial Reading	Dial Grad.	Total Range	Dial Dia.	Accuracy	Dia. Points Included	Point Length
52-562-253-0	0 - 4 - 0	0.0001"	0.008"	1"	0.00016"	0.040", 0.080" & 0.120"	0.500"
52-562-453-0	0 - 4 - 0	0.0001"	0.008"	1-1/2"	0.00016"	0.040", 0.080" & 0.120"	0.500"
52-562-252-0	0 - 15 - 0	0.0005"	0.060"	1"	0.00065"	0.040", 0.080" & 0.120"	0.800"
52-562-452-0	0 - 15 - 0	0.0005"	0.060"	1-1/2"	0.00065"	0.040", 0.080" & 0.120"	0.800"

Order No.	Description	List Price	Sale Price
52-562-253-0	Girod Tast Indicator	\$214.91	\$172.00
52-562-453-0	Girod Tast Indicator	235.72	187.00
52-562-252-0	Girod Tast Indicator	211.45	169.00
52-562-452-0	Girod Tast Indicator	233.48	199.00

Bevel Protractor with 6" & 12" Blades

- Magnifier for vernier scale
- Includes 6" & 12" blades and an angle attachment.
- Satin chrome finish for easy readings in 0-90° sectors
- Graduation: 360° with 4, 0 - 90° quadrants
- Reading to 5 minutes with vernier
- Includes fitted case



Order No. 52-440-612-0

Sale \$154.⁰⁰

List \$224.64

Universal Dial Protractor with 6" & 12" Blades

- Each dial graduation: 5 minutes
- Wide spaced graduations
- Hardened stainless steel construction with satin chrome finish for easy reading
- Includes lock and acute angle attachment
- Includes 6" & 12" blades
- Supplied in fitted case



Order No. 52-440-777-0

Sale \$99.⁵⁰

List \$174.69

Universal Electronic Protractor

- Hardened stainless steel
- Range selection: 1 x 360°, 2 x 180°, 4 x 90°
- Dual reading LCD display arc minutes/decimal degrees
- Preset function
- 6" and 12" blades and acute angle attachment included
- Fine adjustment
- Measuring range: 0-360°
- Resolution: 30 seconds
- Accuracy: ±5 minutes



Order No. 54-440-750-0

Sale \$255.⁰⁰

List \$318.48

XTRA-VALUE 9" Electronic Level

- Measuring range: 4 x 90°
- Resolution: 0.05°
- Accuracy: ± 0.2°
- Repeatability: ± 0.05
- Standard 9 volt battery (250 hours life)
- Dimensions: 9"L x 1"W x 2-1/4"H
- Includes two-way level and plumb vials
- Reversible reading for inverted use



Order No. 54-440-600-0

Sale \$61.⁰⁰

List \$71.28



Light Line Marking Protractors

The *Light Line Marking Protractor* combines the features of a marking gage with those of a protractor. Graduated in four 0-90° quadrants and 0.001". Made of black anodized aluminum with high contrast white numbering. It can also be used as a depth gage for simple depth measurements. A raised base enables the use of an edge as a reference.



52-441-200-0

- Full aluminum construction, black anodized
- High contrast white numbering
- 2 positive locks for setting and holding readings and angles
- Available in 8"/200mm and 12"/300mm
- Main body is offset for marking from an edge reference
- Etched in inch graduations and 0-90° in four quadrants
- Graduated in 1° increments and 0.001"
- Light weight for easy handling
- Completely made in Germany



Order No.	Range	List Price	Sale Price
52-441-200-0	NEW 8"/200mm	\$80.00	\$76.00
52-441-300-0	NEW 12"/300mm	88.00	83.50

Light Line Protractor

Fowler's *Light Line Protractors* offer light weight angle measurements. Made of black anodized, hard coated aluminum with high contrast white numbering. The opened base makes it very easy to handle. Laser marked in 1° graduations. Used in machining, marking, carpentry and many other applications.



52-440-200-0

52-440-300-0

- 0-180° range
- Black anodized aluminum construction
- High contrast white numbering
- Positive lock knob for holding position
- Fine tip laser finish for easy reading
- Made in Germany



Order No.	Base x Beam	List Price	Sale Price
52-440-120-0	NEW 5" x 6"	\$20.00	\$19.00
52-440-200-0	NEW 8" x 12"	34.00	32.25
52-440-300-0	NEW 12" x 20"	68.00	64.50

2" to 6" Right Angle Dial Bore Gage

For measuring difficult-to-reach bores in tight or inconveniently located spaces on machine applications.

- Carbide anvils
- Easy-to-read
- Economical
- Range: 2" to 6"
- Graduation: 0.0005"
- Chrome plated handle
- Insulated grip
- Includes 2" contact extension

**Save
50%**



Order No. 52-646-250-0

Sale \$137.00 List \$274.50



Fowler®

TOOL-A-THON

Extender-E Electronic 1.4" to 6" Dial Bore Gage Set

XTENDER-E Industry's two most popular bore gage ranges combined in one easy-to-use ELECTRONIC set!

All the same benefits included in the X-Tender Dial Bore Gage are now available with an electronic indicator providing inch/metric reading capability. Preset size of master for absolute reading and minimum hold feature to lock on the bore size as the gage is rocked in the part to be measured.



Bore Gage Features:

- Range: 1.4"-6"/35mm-150mm
- Carbide anvils
- Easily adjustable
- Self-centering
- Includes extension holder
- Shop hardened case

Indicator Features:

- Dual reading inch/metric electronic indicator
- Bar graph and numeric digital display
- Resolution: .00005"/.001mm
- Preset with recall
- ABS/INC measurement
- Min/Max/TIR



For instructional video search
"X-tender Bore Gage" at www.youtube.com

Order No. 54-646-401-0

Sale \$255.00 List \$320.33

Get a Metric Setting Master for **\$100.00**

with the purchase of the **METRIC XTENDER Bore Gage Set**

**Only valid with the
Metric X-tender Bore Gage Set
52-646-220-0*



52-646-220-0

53-646-010-0

Extender 1.4" to 6" or 35mm to 160mm Dial Bore Gage Sets with Carbide Anvils

XTENDER Industry's two most popular bore gage ranges combined in one set!

Carbide Anvils

- Easy-to-read
- Economical
- Graduation: 0.0005" or 0.01mm
- Insulated grip
- 1.4" to 6" range or 35 to 160mm
- Chrome plated handle
- Includes extension holder and fitted case



52-646-400-0



40% off — 52-646-400-0 & 52-646-220-0 Sets
25% off — 52-646-500-0 Set

Order No.	Description	Graduation	List Price	Sale Price
52-646-400-0	Inch X-Tender Bore Gage Set	0.0005"	\$185.40	\$110.00
52-646-500-0	Inch X-Tender Bore Gage Set	0.0001"	231.75	173.50
52-646-220-0	Metric X-Tender Bore Gage Set	0.01mm	204.87	120.00

Dial Bore Gage Sets with Carbide Anvils

Carbide anvils

- Easy-to-read
- Economical
- Graduation: 0.0005"
- Chrome plated handle
- Insulated grip
- Includes extension holder and fitted case



52-646-100-0



52-646-300-0

Order No.	Description	Range	List Price	Sale Price
52-646-100-0	Dial Bore Gage Set	0.7 - 1.5"	\$147.60	\$110.00
52-646-300-0	Dial Bore Gage Set	2 - 6"	121.95	105.00

Bore Gage Setting Master Kit - Inch & Metric

Fowler's Bore Gage Setting Master Kit is used for accurately setting any bore gage up to 6"/150mm in diameter to an accuracy of .0001"/.003mm.

Each Set includes:

Setting Device (53-646-000-1 - Inch Model)

- Base anvil: 3.950" x 1.050"
- Adjustable anvil 2.375" x .375" (two each)
- Internal capacity: 6"/150mm
- Depth capacity: 1"/25mm
- Centralizer capacity width: 2.750"
- Quick-release holder for fast adjustment
- **Can also be used for external setting, depending on application (external mics, snap gages, caliper gages)**

Economy Gage Block Sets

Inch model:

- 36 piece
- Tolerances to .00005"
- Certificate of Calibration to N.I.S.T.

Metric model:

- 33 piece
- AS-2 grade
- Certificate of Calibration to N.I.S.T.

NEW!

Includes:
Bore gage setting master
and gage block set.
All in a custom-fitted
case!



53-646-000-1

Order No.	Description	List Price	Sale Price
53-646-000-1	NEW Inch Bore Gage Setting Master Kit	\$297.47	\$221.00
53-646-010-0	Standard Metric Bore Gage Setting Master Kit — SPECIAL PRICE!	309.98	\$195.00

SHOP-BLOX® Rectangular Gage Block Sets



**TOOL-A-THON
BEST SELLER!**
FOWLER HIGH PRECISION

53-672-081-0

- Manufactured to meet N.I.S.T. Federal Specification ASME B89. 1.9 - 2002 tolerances on length for inch gage blocks
- Certificate of Calibration traceable to N.I.S.T.
- Tolerances to ± 0.00005"
- In high-quality fitted wood case



Order NO.	Description	List Price	Sale Price
53-672-036-0	36 piece Economy Rectangular Gage Block Set	\$303.13	\$211.00
53-672-081-0	81 piece Economy Rectangular Gage Block Set	518.44	360.00

X-Glide Lubricant and Protectant

- Specifically formulated for precision tools
- Synthetic lubricant enriched with multiple anti-friction additives
- Sub-micron particle size allows for maximum penetration and durability
- Antistatic additive prevents the attraction of dust and dirt
- Contains no solvents, propellants or flammable gases
- PH neutral
- 2.5 oz. spray bottle

**Save
50%**



Order No. 53-885-105-0

Sale \$5.00

List \$10.51

Prices & Specifications are subject to change without notice.

39

Fowler

TOOL-A-THON

Volume 16.3

Mini-Mag Plus

The **NEW** Mini-Mag PLUS Protractor provides instant 360° digital inclination display of any angle with the additional unique feature of embedded magnets on both sides and the bottom which make it ideal for a variety of measurements along with a USB rechargeable battery, a backlit display, Tilt% function and IP54 protection against water, oil, and fluids.

- IP54 protected against debris and fluids
- USB rechargeable battery with status light (cable included)
- Backlit display
- Tilt % function
- Auto off after 5 minutes
- Embedded magnets on sides and bottom (3.5lb. pull)
- Measuring range: 360° (4 x 90°)
- Display automatically inverts
- Resolution: 0.05°
- Accuracy: ± 0.2°
- Repeatability: 0.05°
- Hold feature
- Zero function
- Smaller size: 2.12" x 2.12" x .9"
- Light weight: 2.7 oz.
- Anodized alloy housing



Order No. 54-422-500-0

AVAILABLE IN OCTOBER

Sale \$85.00 List \$105.00

mini-MAG Protractor™

The mini-MAG Protractor provides instant 360° digital inclination display of any angle with the additional unique feature of embedded magnets on both sides and the bottom which make it ideal for a variety of measurements.

- Embedded magnets with 3.5lb. pull
- Uses standard 9V battery (250 hrs.)
- Measuring range: 360° (4 x 90°)
- Display automatically inverts
- Resolution: 0.05°
- Accuracy: ± 0.2°
- Repeatability: 0.05°
- Hold feature



Display inverts for easy reading!

Dimensions:
L: 2.375" x W: 1.375" x H: 2.375"

Order No. 54-422-450-1

Sale \$49.99 List \$94.97



Fowler Digi-Pro Electronic Protractor

The Digi-Pro electronic protractor includes embedded magnets for unique measurement areas. On/Off, Zero, Hold and Reverse feature to invert the display for easier reading in certain situations.

- Embedded 25 lb. pull magnets
- Full, 360° measuring range
- Accuracy: ± 0.2°
- Repeatability: ± 0.05°
- Resolution: 0.05°
- Invertible display feature
- Voltage: Standard 3V lithium battery



54-440-740-1



54-440-775-1

Use the Digi-Pro to make fast and accurate angular measurements!

Order No.	Description	List Price	Sale Price
54-440-740-1	4" Digi-Pro Electronic Protractor	\$86.70	\$50.00
54-440-775-1	12" Digi-Pro Electronic Protractor	103.94	60.00

RULES

EZ-Read Black Face Rules

- Hardened stainless steel
- White easy-to-read micro-fine graduations against a black, non-glare finish



52-297-006-0



52-330-006-0

Satin Chrome Rules

- Tempered steel
- Non-glare
- Sharp, easy-to-read microfine graduations

Golden Rules

- Titanium coated for superior wear resistance
- Non-glare finish=RC80
- Scratch resistant microfine graduations with excellent clarity and contrast

GRADUATIONS

4R: 8ths, 16ths, 32nds, 64ths

16R: 32nds, 64ths, 50ths, 100ths



52-299-006-0

RIGID STEEL RULES

Order No.	Finish	Size	Reading	List Price	Sale Price
52-330-006-0	Satin Chrome	6"	4R	\$11.72	\$10.00
52-337-006-0	Black	6"	4R	9.89	8.40
52-339-006-0	Golden	6"	4R	24.40	20.75
52-330-012-0	Satin Chrome	12"	4R	20.32	17.30
52-337-012-0	Black	12"	4R	20.32	17.30
52-339-012-0	Golden	12"	4R	46.76	39.75
52-350-006-0	Satin Chrome	6"	16R	10.97	9.00
52-338-006-0	Black	6"	16R	9.89	8.20
52-350-012-0	Satin Chrome	12"	16R	18.92	15.50
52-338-012-0	Black	12"	16R	14.84	12.50

FLEXIBLE STEEL RULES

Order No.	Finish	Size	Reading	List Price	Sale Price
52-295-006-0	Satin Chrome	6"	4R	\$11.29	\$9.60
52-297-006-0	Black	6"	4R	9.25	7.85
52-299-006-0	Golden	6"	4R	23.97	20.30
52-295-012-0	Satin Chrome	12"	4R	17.31	15.00
52-297-012-0	Black	12"	4R	14.19	12.50
52-299-012-0	Golden	12"	4R	43.00	36.55
52-308-006-0	Black	6"	16R	9.46	8.00
52-310-006-0	Satin Chrome	6"	16R	11.29	10.00
52-308-012-0	Black	12"	16R	14.19	12.00
52-310-012-0	Satin Chrome	12"	16R	16.56	14.00

Light Line Depth and Marking Gage

Light Line Depth and Marking Gage makes taking depth measurements as well as marking easy. Made from black anodized aluminum with high contrast white numbering and a positive lock to hold settings. Marked in both inch and metric, a special laser ensures clearly readable graduations. A raised base enables the use of an edge for a reference.



52-300-300-0

- Full aluminum construction, black anodized
- High contrast white numbering
- Positive lock for setting and holding readings
- Available in 8"/200mm and 12"/300mm
- Main body is offset for marking from an edge reference

- Etched in both inch and metric
- Light weight for easy handling
- Completely made in Germany

NEW!



Order No.	Range	List Price	Sale Price
52-300-200-0	NEW 8"/200mm	\$24.00	\$22.80
52-300-300-0	NEW 12"/300mm	27.00	25.65

Prices & Specifications are subject to change without notice.

41

Fowler

TOOL-A-THON

Volume 16.3

COAX-2D

2 Dimensional Coaxial Indicator Sets



Use the 2D Coaxial Set for accurate component centering and positioning in most machining applications. The 2D Coaxial indicator can be used at any angle and the dial remains stationary during the rotation of the machine spindle.

Features:

- Indicator assembly with 1.6" (42.5mm) diameter dial
- Graduations and revolution counter 0.0005" (.01mm)
- 3 Internal and 3 External feelers
- Center point feeler
- Restraining arm
- Complete in a fitted case

GREAT SHOP TOOL!

Specifications:

- Length: 6-7/8" (175mm)
- Shank: 3/8" dia. x 7/8" (10mm x 20mm) long
- Feeler ball: 1/8" (3mm) dia.
- Dial readings: 0-50
- Measuring range: 0.250" (6mm) axis offset
- Speed—recommended not to exceed approx. 800 RPM
- Repeatability to within 0.0002" (0.005mm) of true center
- Capacity depends on feelers installed, but overall range is 5/32-12" (4-300mm) internal diameter; 0-12" (0-300mm) external diameter



52-710-025-0

Order No.	Description	List Price	Sale Price
52-710-025-0	2D Coaxial Set-Inch	\$238.99	\$160.50
52-710-030-0	2D Coaxial Set-Metric	243.67	173.80

Combination Square

- Blades are chrome plated, fully hardened and tempered,
- Square head has level and scribe point
- Double indexed protractor is graduated 180° in both directions
- 52-370-012-0 graduated in 8ths, 16ths, 32nds and 64ths
- 52-378-006-0 graduated in 32nds, 64ths, 50ths and 100ths



52-370-012-0

Order No.	Description	List Price	Sale Price
52-370-012-0	Square, Protractor and Center Head with 12" blade	\$200.58	\$150.00
52-378-006-0	2 Piece Combination Square (6" blade, 16R grads.)	78.05	68.00

Double Squares

- The precision ground satin chrome blades are hardened and tempered
- Double Squares can also be used as parallels
- Cast heads are available with both 4" and 6" blades
- Blades supplied in 4R graduations
- Supplied in a carton box



52-435-000-0



Order No.	Description	List Price	Sale Price
52-435-000-0	Double square, cast head with 4" blade	\$44.60	\$35.50
52-435-006-0	Double square, cast head with 6" blade	48.48	39.50

Steel Squares & Sets



52-432-246-0

- Made of the finest carbon tool steel, these economy squares have true right angles both inside and outside
- Beams and blades ground and lapped for straightness and parallelism
- Hardened blade
- Beam grooved at inner corner for clearance of burrs and dirt
- Squareness of blade edge to the working face: 2" & 3" = $\pm 0.0006"$, 4" & 6" = $\pm 0.0008"$, 9" & 12" = $\pm 0.0012"$

Sets come complete in a "Shop Hardened" molded case!

Blade Size	Beam Size
2"	1.5"
3"	2.5"
4"	3"
6"	4"
9"	6"
12"	8"

Order No.	Size/Description	List Price	Sale Price
52-432-444-0	3 Piece Square Set: 2", 4" & 6" with shop hardened case	\$61.49	\$54.00
52-432-246-0	4 Piece Square Set: 2", 3", 4" & 6" with shop hardened case	73.21	63.00
52-432-469-0	4 Piece Square Set: 4", 6", 9" & 12" with shop hardened case	155.00	129.00
52-432-004-0	4" Square only	22.15	18.50
52-432-006-0	6" Square only	24.62	20.85
52-432-009-0	9" Square only	49.24	41.85
52-432-012-0	12" Square only	83.64	74.00

Bevel Edge Squares

- Squares have accurate right angles both inside and outside.
- Made from a single piece of fully seasoned tool steel.
- Matte finish
- Beams and blades are ground and lapped for straightness and parallelism. Blades beveled both edges of each side.
- Squares fully hardened to Rockwell 55C.
- Packed in individual carton.
- Designed for layout & measurement work.
- Accuracy = $0.00008" + \frac{\text{Length (blade)}}{100,000}$



52-426-002-0

Order No.	Blade Length	Beam Length	List Price	Sale Price
52-426-002-0	2-3/8"	1-3/8"	\$35.12	\$30.00
52-426-003-0	3-1/8"	2"	42.44	36.00
52-426-004-0	4"	3"	46.76	42.00
52-426-005-0	5"	3"	73.65	62.60
52-426-006-0	6-3/4"	4"	55.83	49.00
52-426-008-0	8-1/2"	5-1/8"	83.95	71.35
52-426-010-0	10-1/2"	6-3/8"	102.49	87.10

Cylindrical Squares

- Used for checking squares, height gages and other instruments
- Hardened and the ends are lapped to 90° angular accuracy
- 6" cylindrical squares: $\pm 0.0001"$
- 12" cylindrical square: $\pm 0.00015"$
- Includes handles and wood case



Order No.	Description	List Price	Sale Price
52-750-006-0	6" cylindrical square	\$189.32	\$170.00
52-750-012-0	12" cylindrical square	270.38	240.00

Premium 1-2-3 Block Set

- Hardened (HRC 55–60)
- 23 holes for easy clamping, 5 tapped, 18 untapped thru holes.
- Complete in a shop-hardened case
- Surface finish: 6-16 μ "
- Accuracy: 0.0001"/1"
- Includes hex wrench and 5 mounting bolts (3/8"-16)



Order No. 52-439-032-0

Sale \$72.00

List \$81.50

2-4-6 Blocks

- 23 holes for easy clamping
- Sold in pairs
- Useful in layout & grinding work
- Accuracy: $\pm 0.0002"/1"$
- Matched accuracy: $\pm 0.0002"$



Order No. 52-439-246-0

Sale \$125.00

List \$211.67

1/8" Parallel Sets

- Made from high-grade alloy steel, hardened and ground from 1/8" stock with 2 holes in each parallel.
- 10 pairs, 6" length, 1/8" width.
- 1/2", 5/8", 3/4", 7/8", 1", 1-1/8", 1-1/4", 1-3/8", 1-1/2" & 1-5/8"
- Height specifications relate to consistency within each pair. Absolute heights are nominal.
- Parallelism: $\pm 0.0002"$
- Hardness 58-63 HRC
- 52-437-125-0 Paired in height: $\pm 0.00015"$
- 52-437-000-0 Paired in height: $\pm 0.001"$



52-437-125-0

Order No.	Description	List Price	Sale Price
52-437-000-0	1/8" Parallel Set	\$229.01	\$175.00
52-437-125-0	1/8" Premium Parallel Set	287.23	242.00

1/2" Parallel Set

- Set of four pairs of parallels are hardened and ground. A must for every shop.
- Sizes: 1", 1-1/4", 1-1/2" and 1-3/4" in height x 6" long with 5/16" holes
- 1-1/2" and 1-3/4" parallels are 1/2" thick
- 1" and 1-1/4" parallels are 3/16" thick
- Width & height variations: maximum .0004"
- Includes fitted case



Order No. 52-437-001-0

Sale \$130.00

List \$216.30

All-Angle V-Block

- For grinding, milling or drilling
- Made of hardened and precision ground tool steel
- Sides are parallel and vee is central and ground to .0003"
- V-Block has four 3/8" — 16 tapped holes, two in the bottom and one on each side for angle non-clamping
- Dimensions: 3-5/8" long x 1-7/8" wide x 1-7/8" high (including clamp).
- Holding capacity: 1-5/16", includes clamp



Order No. 52-475-050-0

Sale \$49.00

List \$76.54

Magnetic V-Block

- Permanent, powerful magnet
- Faces and V accurately ground
- Parallelism and squareness: .0008"
- V central to .008", hardened to 35-45 HRC.
- The holder exerts a magnetic force on the upper, lower and V-channel surfaces. Magnetic force is simply switched off by means of a lever.
- On-off switch for positioning and removal.
- Includes fitted carton box



52-585-075-0

Order No.	Overall Dimensions	List Price	Sale Price
52-585-070-0	2-38" wide x 4-78" long x 2-78" high	\$177.24	\$100.00
52-585-075-0	2-38" wide x 4" long x 3-78" high	253.07	150.00

X-BLOX[®] V-Block Set

2 each @:

- Dimensions: 1-1/2" L x 1-1/4" W x 1-1/4" H
- Work capacity: Approximately 1"

2 each @:

- Dimensions: 2" L x 1-1/2" W x 1-1/2" H
- Work capacity: 1-1/2"

All feature:

- Surfaces are square and parallel within .0005"
- V-grooves are square and parallel with all surfaces within 0.0005"
- Corresponding dimensions for each pair are alike within 0.0005"
- All enclosed in shop-hardened case



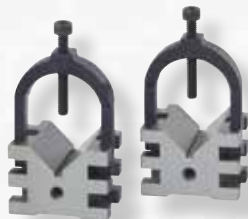
Order No. 52-475-500-0

Sale \$104.00

List \$122.44

V-Block Set

- Two clamps, with screw hole at 90 degrees for positive clamping of work, are included
- Clamping capacity = 2"(50mm) Height 2", Length 2-3/4"
- V-Blocks are constructed with stepped grooves which allow the clamps to be inserted without protrusion, thus allowing V-Blocks to be used on base, ends or sides.
- Hardened steel, parallel and square within .0004"
- Matched pair of V-Blocks are perfectly aligned with 90 degree V-grooves ground central and parallel to the sides and base



Order No. 52-475-555-0

Sale \$170.00

List \$234.40

Electronic Edge Finders

- Six equally spaced light ports provide visibility at any angle
- Made in the USA
- Edge finder lights instantly when stylus touches work edge
- Repeatability: 0.0002"
- Works on any conductive metal



Along with light indication, model #54-575-650-0 emits an audible "beep" at time of contact.

Order No.	Stylus	Shank	Audible	Battery	List Price	Sale Price
54-575-600-0	0.200"	1/2"	NO	12 volt	\$33.11	\$25.00
54-575-625-0	0.200"	1/2"	NO	12 volt	116.75	91.00
54-575-650-0	0.400"	3/4"	YES	12 volt	116.75	91.00

Edge Finder Set

- 3/8" x .200" edge finder
- 1/2" x .200" edge finder
- 1/2" x .200" combo edge finder
- 1/2" x .500" edge finder
- Hardened and ground
- Complete in fitted case



Order No. 52-575-125-0

Sale \$39.00

List \$48.98

Audible/Conventional Edge Finder Set

- 3/8" x .200" combo edge & center finder
- 1/2" x .200" combo edge & center finder
- 3/8" x .200" audible edge finder
- 1/2" x .500" audible edge finder
- Hardened and ground
- Complete in fitted wooden case



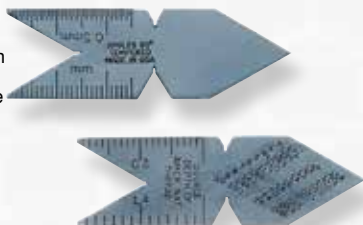
Order No. 52-575-100-0

Sale \$56.00

List \$61.26

Center Gage

- Center gages made of spring tempered steel—lapped edges & notches according to American National & U.S. 60 degree standards.
- Notches have full clearance slots; satin chrome finish; microfne graduations.



Order No. 52-505-001-0

Sale \$7.50

List \$9.89

Thickness Gages

- Each leaf of the thickness gage made of fine tempered steel, hardened
- The exact thickness is marked on each leaf
- Steel case with lock nut
- Meets U.S. Federal Specifications

52-485-010-0



Fowler

Order No.	Description	List Price	Sale Price
52-485-006-0	Tapered Thickness Gages-Inch 26 Leaf Set: 0.0015", 0.002", 0.0025", 0.003", 0.004", 0.005", 0.006", 0.007", 0.008", 0.009", 0.010", 0.011", 0.012", 0.013", 0.014", 0.015", 0.016", 0.017", 0.018", 0.019", 0.020", 0.021", 0.022", 0.023", 0.024" and 0.025". Length: 3".	\$16.56	\$14.25
52-485-010-0	Tapered Thickness Gages-Metric. 20 Leaf Set: 0.05mm, 0.10mm, 0.15mm, 0.20mm, 0.25mm, 0.30mm, 0.35mm, 0.40mm, 0.45mm, 0.50mm, 0.55mm, 0.60mm, 0.65mm, 0.70mm, 0.75mm, 0.80mm, 0.85mm, 0.90mm, 0.95mm and 1mm. Length: 100mm.	18.90	11.00

Screw Pitch Gages

- Narrow designed blades permit use for internal and external screw threads
- Locking device at each end to secure all blades for storage or position
- Correct pitch is determined by matching blade teeth with threads
- Precisely ground and finished
- Blades marked with thread size



52-485-015-0

Order No.	Description	List Price	Sale Price
Inch Series 52-485-015-0	Screw Pitch Gage with 30 blades: 4 to 42 pitch standard V thread	\$11.34	\$9.50
Metric Series 52-485-020-0	Screw Pitch Gage with 24 blades: 0.25mm to 6.0mm	11.34	9.50

Radius Gages

- Features an eccentric mounting for clearance between leaf and case when gage is opened; each leaf stamped with radius size.
- Leaves shaped for use in any position or angle to measure fillets and radii in corners or against shoulders. Held securely in desired position by a locking device.
- Use to lay out and check radii of tools, dies, patterns, etc.



52-470-100-0

Order No.	Range	Number of Leaves	List Price	Sale Price
Inch Series 52-470-100-0	1/32" - 1/4" by 64ths (15 male and 15 female)	30	\$30.09	\$24.25
Metric Series 52-470-110-0	1mm - 7mm (1mm, 1.25mm, 1.5mm, 1.75mm, 2mm, 2.25mm, 2.5mm, 2.75mm, 3mm, 3.5mm, 4mm, 4.5mm, 5mm, 5.5mm, 6mm, 6.5mm, 7mm) (17 male and 17 female)	34	34.68	24.25

Wire Gages

- Satin chrome finish
- Accurately determines thickness of American wire sizes from 0-36 gage
- Individual sizes permanently embossed near each size



52-480-030-0

52-480-040-0

Order No.	Description	List Price	Sale Price
52-480-030-0	U.S. Standard Gage: Measuring range: Gage no. 0 to 36	\$24.83	\$21.00
52-480-040-0	American Standard Wire Gage: Measuring range: Gage no. 0 to 36	24.83	21.00

Prices & Specifications are subject to change without notice.

TOOL-A-THON

Volume 16.3

Carbide Super Scriber



- Lightweight
- Retractable carbide tip
- Knurled grip
- Machined aluminum body
- Pocket clip

Order No.	Description	Overall Length	List Price	Sale Price
52-500-050-0	Carbide Super Scriber	6.5"	\$33.60	\$25.00
52-500-055-0	Carbide Refill		10.29	8.00

Retractable Tip Carbide Scriber with Magnetic End Cap



- Heavy duty
- Replaceable carbide tip
- Knurled grip
- Magnetic end cap
- Pocket clip

Order No.	Description	Overall Length	List Price	Sale Price
52-500-080-0	Replaceable tip carbide scriber	5.75"	\$9.26	\$6.00
52-500-085-0	Carbide Refill		1.87	

Rapid Burr



for steel & aluminum

- "Quick-change", supplied with a blade for steel and aluminum.
- Unique rounded head blade for safe deburring of drilled and machined holes
- Curved blades swivel freely to automatically follow shapes, contours and holes
- For use without slippage or fatigue



Order No. 52-483-025-0

Sale \$4.50

List \$6.90



Etching Pen



A "must" for any tool room and machine shop for general marking purposes, Fowler's metal etching pen is used on copper, copper alloy, stainless steel, hardened steel tools and castings, etc. Use it to initial personal tools or to restore graduations on rules, height gages, calipers, micrometers, etc. Its low-cost, disposable design offers limitless applications.

Order No. 52-730-005-0

Sale \$14.50

List \$18.26

Screwdriver and Tool Set

- This precision Screwdriver and Tool Set is ideal for miniature work.
- Features knurled and chromed swiveling handles.
- Contains 9 screwdrivers, 1 tapered point scratch awl and 1 magnetic pick-up tool



Order No. 52-490-003-0

Sale \$21.00

List \$25.91

Deep Hole Light

- Deep Hole Light permits viewing in deep holes, around corners, under grooves, etc.
- Includes battery case for 2 penlight batteries and a battery case for one battery for use where space is limited; batteries not included.
- Features a positive switch. Curved and straight light conveying devices place intense illumination at their ends directly on the bottom of the hole being viewed. A small mirror permits viewing in a manner similar to a dentist examining teeth.
- Includes plastic case.



Order No. 52-270-000-0

Sale \$35.75

List \$47.71

40x Pocket Scope with 0.001" reticle



- Fixed focus, no moving parts-never loses focus
- Accurate readings without adjusting
- Compact in size, under 5"
- 0.190" field of view
- 0 - 0.07" scale range
- Provides on-the-job viewing
- Special bevelled opening gathers and focuses light

Order No. 52-662-040-0

Sale \$19.95

List \$34.61

Boreview Inspection Set

Now internal inspection in any industry can be made quickly and easily with Fowler's bore viewer.

Its compact size and built-in illumination make our bore viewer fully portable. Combine that with stainless steel construction, a magnifying glass and inspection mirror, and you get a top quality internal inspection viewer that can be used anywhere in a wide variety of applications!

- Use for inspecting bores, cavities, threads, undercuts, raceways, surface finish, tools and intricate assemblies
- Views bores from 1/8" in diameter and up
- Stainless steel construction
- Mold makers-perfect for inspecting passages and cavities
- Maintenance-inspect many industrial problems on-site and avoid disassembly



Order No. 52-660-777-0

Sale \$149.00

List \$362.35

X-TRA RANGE 20x Extended Range Microscope

Fowler's Extended Range Microscope is ideal for viewing the surface of items that will not fit conventional microscope plates.



- 10X eyepieces with adjustable centers and rubber eyecups
- 2X objective lens
- Top swiveling light source - 12 volt lamp, 110V supply
- Positive rack and pinion focusing
- Articulated 12" long extension arm
- Heavy base plate insures stability and houses transformer which measures 5" x 8" x 2.5"
- Overall base and column height of 12"



Order No. 53-640-280-0

Sale \$295.00

List \$368.33

Stereo Microscope

Fowler's Stereo Microscope is a high quality Optical Instrument in a compact, simply constructed body. Used exclusively for surface inspection.

The Stereo Microscope is also used in diverse fields ranging from electronic, food, precision, chemical, metallographic, metallurgical, ceramic, textile and to the fields of medicine and biology, geology, mineralogy, paleontology, archeology and more.

Standard equipment includes 1X and 3X objectives, 10X eyepiece and 12 volt incident (top) illuminator with an off/on switch.

- Wide field eyepieces are mounted in 45° inclined eyetube with interpupillary distance adjustable from 2 to 3" (50 to 75mm).
- Objectives are mounted in 180° revolving turret with positive click stop — parfocal and parcentered
- Optional eyepieces available to increase magnification to 60X.
- 2.5"(60mm) reversible white/black stage plate provided.
- Pair of rubber eye cups included



Eyepiece	Objective	Magnification	Working Distance	Field of View
10X	1X	10X	2.0" (50mm)	0.80" (20mm)
10X	3X	30X	2.40" (61mm)	0.30" (7.5mm)
15X	1X	15X	2.0" (50mm)	0.60" (15mm)
15X	3X	45X	2.40" (61mm)	0.20" (5mm)
20X	1X	20X	2.0" (50mm)	0.40" (10mm)
20X	3X	60X	2.40" (61mm)	0.13" (3.3mm)

Order No.	Description	List Price	Sale Price
53-640-320-0	10/30x Stereo Microscope	\$480.08	\$395.00
Accessories			
53-640-910-0	Pair of 10x eyepieces - standard	73.65	62.00
53-640-915-0	Pair of 15x eyepieces - optional	92.70	75.00
53-640-920-0	Pair of 20x eyepieces - optional	104.55	87.00

Vernier Height Gage



- Range: 24"/600mm
- Adjustable main scale. Quickly "resets" zero for easy reading without special calculations.
- Swing-away magnifier plus extra long vernier scales with wide separations in inch and metric.
- Fine adjustment mechanism.
- Carbide tipped scriber for direct reading over the full range.
- Satin-chrome finish for glare free reading. Raised lands prevent friction wear.
- Beam & slide of hardened stainless steel. Base and measuring surfaces all hardened tool steel, carefully ground and micro-lapped.
- Graduations: 0.001" and 0.02mm

Order No. 52-174-024-0

Sale \$399.⁰⁰
List \$679.70

Electronic Height Gage

An economical height gage that offers high quality, accuracy and durability.



- Large base for easy movement
- True inch/metric conversion
- Range: 0 - 20"/500mm
- Resolution: 0.0005"/.01mm
- Accuracy: $\pm 0.0025"$
- Repeatability: 0.0005"/.01mm ($\pm 2s$)
- Deluxe wooden case with reinforced metal edges
- Large easy to read LCD
- Non-glare chrome reading surface
- Overall height: 28"
- Beam thickness: 1.25 X .4"
- Presetable display

Save 35%

Order No. 54-106-020-0

Sale \$258.⁰⁰
List \$401.60



Super Smooth Movement!

Hi_Gage One

The Fowler-Sylvac measuring system is exceptionally fast (60" per second traverse) and is the most reliable and maintenance free system ever created for measurement

- True inch/metric conversion
- Resolution: 0.0005"/0.01mm
- Repeatability: 0.0004"/10 μ m
- Base size: 5.6" wide x 6.8" length
- Accuracy 0.0016"/0.002"
- Includes scriber/measuring probe
- Direct RS232 output
- **Scale not affected by oil, dust, chips, magnetism, shock, etc.**



52-568-005-0

FREE

Test Indicator & 8mm Ball Probe with Purchase!



Order No.	Range	List Price	Sale Price
54-212-016-1	16"/400mm	\$1455.13	\$1225.00
54-212-024-1	24"/600mm	1812.34	1425.00
Cables			
54-115-526-0	Proximity Cable with USB Connection	\$136.07	\$122.00
54-115-527-0	Proximity Cable with Serial Connection	136.07	122.00

54-212-024-1

Prices & Specifications are subject to change without notice.

51

Fowler

TOOL-A-THON

Volume 16.3

Fowler-Sylvac Scans

FAST AND PRECISE OPTICAL DIMENSIONAL MEASUREMENT FOR ALL CYLINDRICAL PARTS

Discover our new range of Fowler-Sylvac SCAN machines with over 150 measuring features to control the most demanding dimensions and geometrical tolerances.

Our range of Fowler-Sylvac's machines are designed to measure round parts with diameters from 0.25 mm up to 50 mm (80 mm on request) and up to 500 mm long. Most of the cylindrical parts, such as aerospace and automotive shafts and components, connectors, dental screws and implants, hydraulics parts, metal packaging for food and cosmetics, rollers, turbines parts, CNC turned parts, etc. can be measured in a few seconds. Various thread types and features can be measured and analyzed with our machines.



MEASURING PRINCIPLE

All SYLVAC-SCANS incorporate high resolution CCD sensors that combine 2 x 7'000 elements linear arrays, with a patented 7.5° system, which would correspond to a camera with a resolution of 200 megapixels! As the part profile is projected, these sensors, which are capable of detecting the slightest changes at pixel level, act as a light sensitive rule.

The contour of the workpiece is reproduced in shadow image on the software and all the various elements shown can be measured in static (without part rotation) or in dynamic (with part rotation) when geometrical features such as run-out or concentricity must be measured.

For more information contact

Technical Department: 1-800-788-2353



The world's first truly portable
DCC Coordinate Measuring Machine!



- ONLY 30 lbs.
- NO air needed
- High accuracy
- Calibration Sphere Included
- Quick Start Guide
- Reusable Shipping Container
- Standard 1 year warranty

For a complete list
of features
visit www.zcat.com



Fowler

TOOL-A-THON

Contact Fowler for a demo 1-800-788-2353

Order No.	Description	List Price
54-950-001-0	zCAT DCC CMM	\$39,950.00
Accessories		
54-950-105-0	zCAT MK4 Software	4950.00
54-950-150-0	zCAT Travel Case	750.00
54-950-120-0	zCAT Calibration	1750.00
54-950-110-0	zCAT 5 Year Service and Calibration Contract	6850.00
54-950-115-0	zCAT 5 Year Extended Warranty	1700.00
54-950-101-0	TP20 Touch Probe	3620.00
54-950-165-0	zCAT Dust Cover	95.00

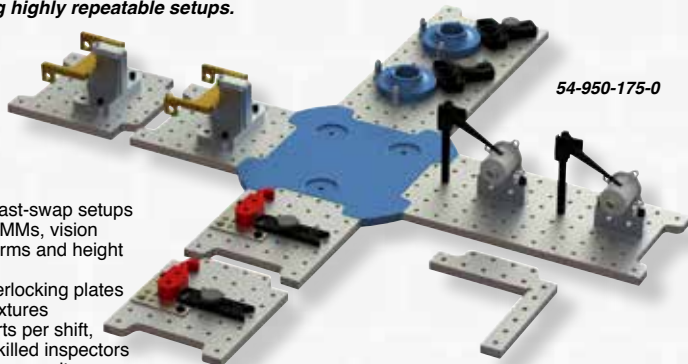
Prices & Specifications are subject to change without notice.



Loc-N-Load™

Quick-Swap Fixture System

Further enhance the value of the zCAT with the LEAN, quick-swap Loc-N-Load Fixture System. Install zCAT onto the unique Loc-N-Load base and start inspecting on the shop floor or near-est conference table. Interlocking fixture plates quickly secure and release with the use of magnets creating highly repeatable setups.



54-950-175-0

Features:

- Create multiple fast-swap setups for your zCAT, CMMs, vision systems, gage arms and height gages
- Ready-made interlocking plates make low-cost fixtures
- Inspect more parts per shift, even with less-skilled inspectors
- Easily access your granite
- Use as dedicated tooling — add to job box

NEW!

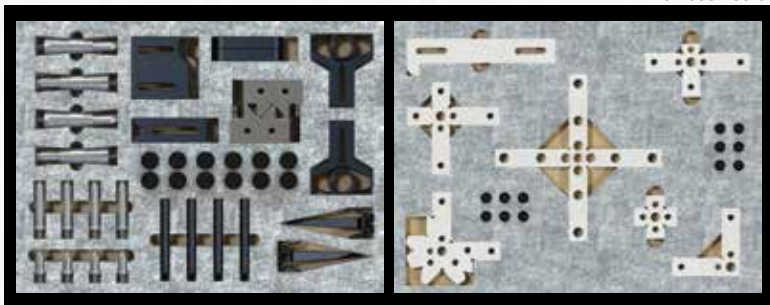
Complete Bundle Set (54-950-175-0)

Includes:

- 4 Cross-Blow Clamps
- 4 D-Block Stop
- 2 Trigger-Block Clamps
- 12 Silver-Bullet, 4 sets/3
- 2 V-Block Sets
- 4 Steel Shaft / Stand-off
- 2 Trigger-Finger
- 2 Hole Adjuster
- 7 Simple-Stop Rails, 1 set / 7
- 30 Hex Keys, plus assorted screws

A Work Holding Kit with a variety of non marring spring action clamps, standoffs and low-profile stops and rails is included with each fixture system.

54-950-185-0



Standardize Inspections....Across ALL Equipment!

Visit www.inspectionarsenal.com for more Information and Demo Video!

Order No.	Description	List Price	Sale Price
54-950-175-0	NEW Complete Bundle Set (Base, Plates & Complete Kit)	\$2629.00	\$2495.00
54-950-180-0	NEW zCAT Base Plate ONLY	569.00	540.00
54-950-185-0	NEW Additional Work Holding Kit	599.00	568.00

Hi_Cal Height Gages

- Extra low measuring force, from 0.2N
- Measurement of internal and external diameters, centerlines, heights, widths and depths
- MIN/MAX/TIR capability
- Excellent repeatability thanks to the motorized carriage
- Intuitive functions/minimizes key strokes
- Great mobility
- High reliability
- Data output USB and RS-232
- Battery life: 40 hours rechargeable during operation
- Touch sensitive probe speed for easy operation
- Base with small footprint

Includes: protective cover, charging set, ruby ball probe Ø3mm, setting gage and calibration certificate



Fowler

TOOL-A-THON

Save \$500



Accessory Probe Sets



54-930-215-0



54-930-217-0

54-931-300-0

FREE Basic Probe Set
with 54-931-450-0 Hi_Cal Purchase
\$593.00 Value!

FREE 1mm Ball Probe with 6"/150mm & 12"/300mm Hi_Cal Purchase

Order No.	Range	Accuracy	List Price	Sale Price
54-931-150-0	6"/150mm	0.00013"/0.0034mm	\$4661.50	\$4160.00
54-931-300-0	12"/300mm	0.00016"/0.0042mm	5357.04	4850.00
54-931-450-0	17.5"/450mm	0.00020"/0.005mm	5608.98	5100.00
Accessories				
54-930-215-0	Full Probe Accessory Set		\$1093.95	975.00
54-930-217-0	Basic Probe Accessory Set		593.64	530.00

Prices & Specifications are subject to change without notice.



Find us on social media!



Fowler High Precision



Fowler High Precision



Fowler_Co



FowlerVid