



"Where Quality Solutions are Defined"

Specialists in Precision Measurement and Quality Shop Tools

30540 SE 84th Street
PO Box 538
Preston, WA 98050

Phone: 360-513-5676
Office: 425-222-9567
Fax: 425-222-9568

Web: www.precisetoolco.com

Sylvac® Hi-Cal Height Gage

The new Fowler/Sylvac Hi-Cal electronic height gage features the latest technology available for vertical measurement. Its light-weight, ergonomic design and new universal keypad make it easy to handle and simple to operate.

Built on a proven Swiss design the new Hi-Cal now includes Direct USB and RS232 connectivity and a simultaneous display of both diameter and centerline information among its many features.

Hi-Cal equals:

Hi-Accuracy

Hi-Resolution

Hi-Repeatability

Hi-Funtionality

Hi-Connectivity



Precise TOOL & GAGE CO.

"Where Quality Solutions are Defined"

Specialists in Precision Measurement and Quality Shop Tools

30540 SE 84th Street
PO Box 538
Preston, WA 98050

Phone: 360-513-5676
Office: 425-222-9567
Fax: 425-222-9568

Web: www.precisetoolco.com

Operator Friendly



The large digital display allows an easy and convenient reading. The probing indicator guarantees excellent accuracy.

All functions for height, reference, min, max and diameter/centerline are directly available to the operator on a simple control pad.

New innovations

Motorized carriage displacement is controlled by a pair of pressure sensitive switches. The harder the operator presses, the faster the carriage moves.

Hi_Cal is also very well connected with both USB and RS-232 as well as a power mains adapter.



Precise TOOL & GAGE CO.

"Where Quality Solutions are Defined"

Specialists in Precision Measurement and Quality Shop Tools

30540 SE 84th Street
PO Box 538
Preston, WA 98050

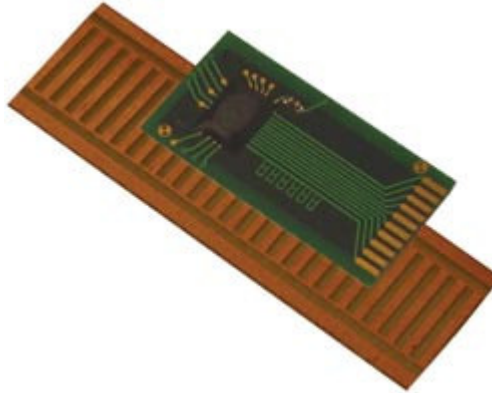
Phone: 360-513-5676
Office: 425-222-9567
Fax: 425-222-9568

Web: www.precisetoolco.com

Accurate and Repeatable

The patented measuring force setting system allows excellent repeatability by removing operator "feel", and can be adjusted for varying probe weights.

The new Sylvac inductive measuring system guarantees a higher accuracy of measurements.



Hi_Cal Height Gage Specifications

Available Ranges:	0-6"/150mm 0-12"/300mm
Resolution:	0.00005"/(0.001mm/1um)
Measuring Pressure:	Adjustable Approx. 0.8 Newtons
Accuracy (STD):	Accuracy: 2.5 [um] + (L/175) [mm]
Repeatbility:	2 um (.000080")
Output Type:	RS-232 C (Bi-Directional) and USB
Display:	Bright LCD with East to Use controls
Interface Connections:	RS232, USB & Power
Operational Temperature:	+10° to +40° C
Power Supply:	Rechargeable Battery Pack (>40 Hours)

SWISS  QUALITY

5 **Fowler**
Year Warranty